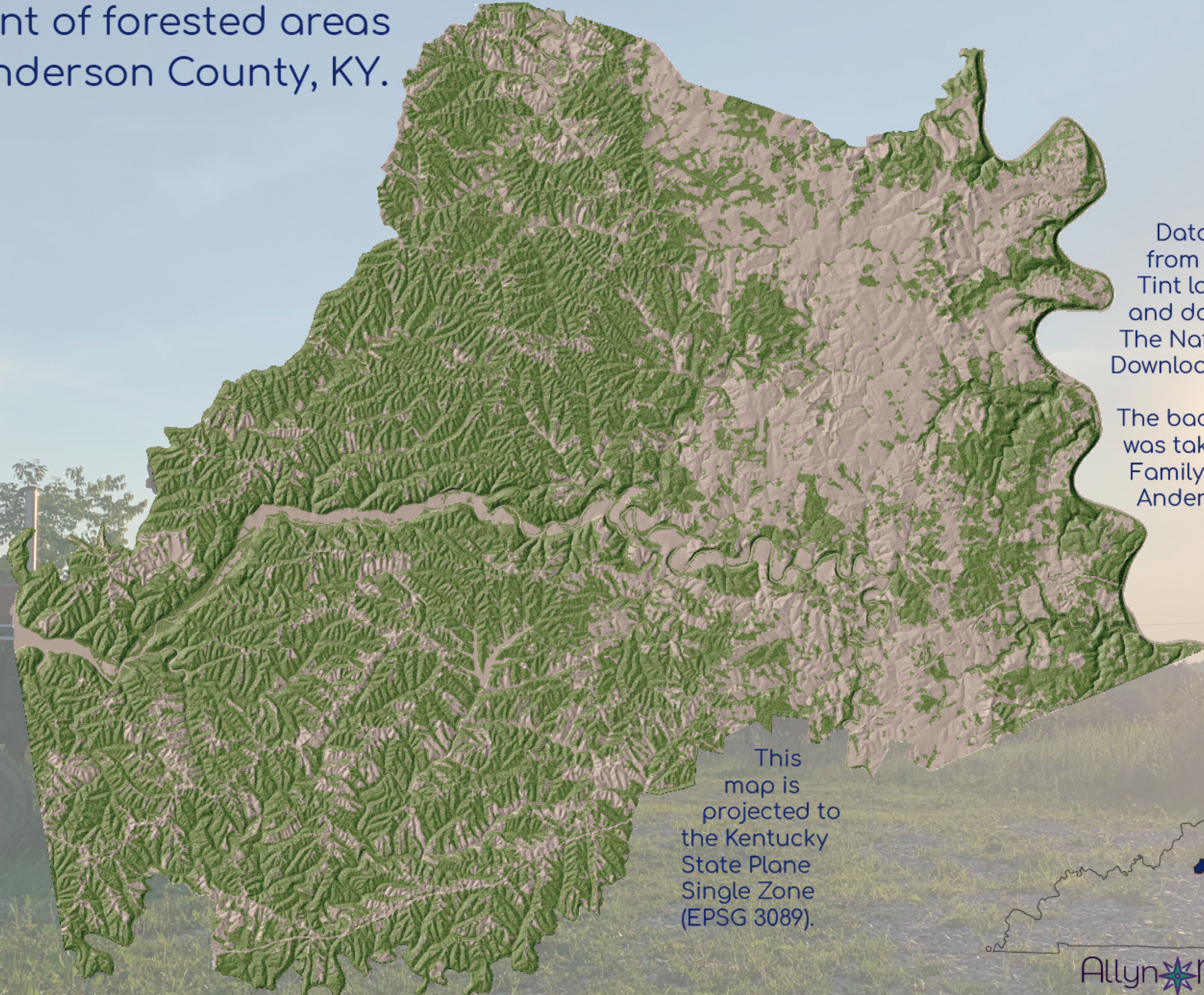


ANDERSON COUNTY TREE CANOPY

Extent of forested areas
in Anderson County, KY.



Data is extracted from the Woodland Tint layer for Kentucky and downloaded from The National Map TNM Download (v2.0) website.

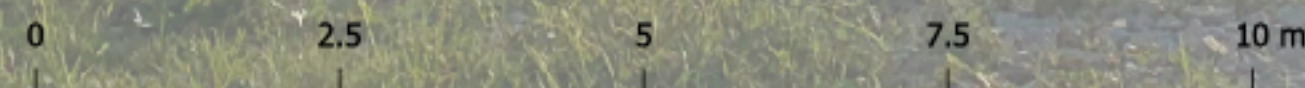
The background image was taken at the Stevens Family Farm in Anderson County.

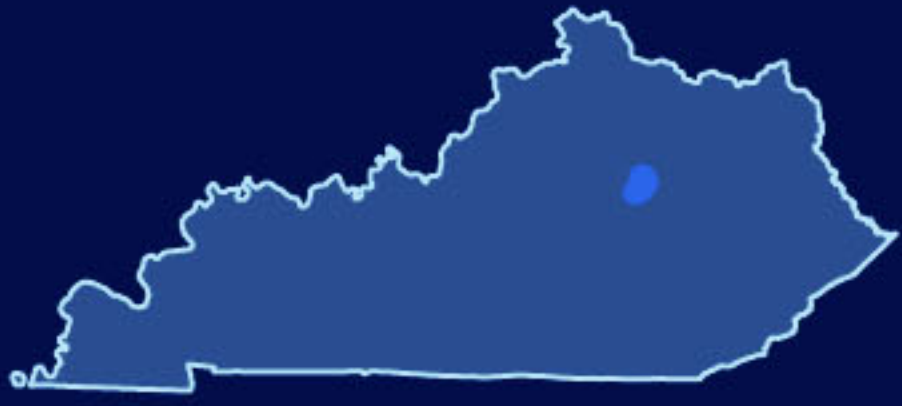
Anderson County has 56.7% of area classified as forested land.

This map is projected to the Kentucky State Plane Single Zone (EPSG 3089).



Allyn Maps
November 2021





Four Mile Creek

Clark County, KY

Locally known as
Muddy Creek

Legend

> 35 Feet

0 Feet

0 0.5 1 2 3 4 Miles

Stevens Brothers Farms

Lawrenceburg, KY



**INTERNATIONAL
HARVESTER**

This map was created using four DEM tiles from KYFrom-Above. The farm border and ponds were created in QGIS using the draw layers tool.

