

UNIVERSITY OF KENTUCKY BOARD OF TRUSTEES

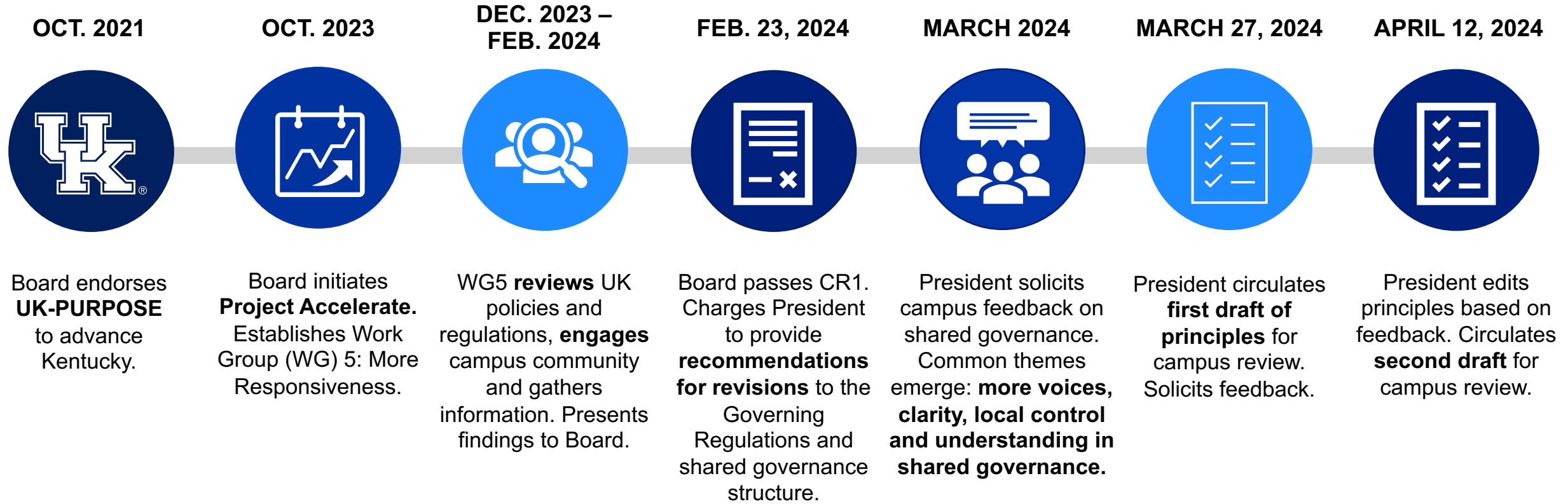
Project Accelerate: More Responsiveness



PROJECT ACCELERATE: MORE RESPONSIVENESS

Our process

Project Accelerate and More Responsiveness — guided by the UK-PURPOSE — focus the University’s expansive capacity and commitment on accelerating efforts to advance Kentucky.



Governance structure

- The backbone of UK's governance was designed in 1917 when the state and the University were very different.
 - 719 students, 194 staff, 93 faculty
 - Total budget: \$225K
 - Colleges: 5
 - Lexington population: 40,000
 - Campus footprint: 65 acres and 20 buildings
- Features of the 1917 GRs and governing structure remain in effect.



As part of the 1917 commencement celebration, 315 graduates with flags cross Limestone Street.

MORE RESPONSIVENESS: SHARED GOVERNANCE

Governance structure

We are a larger, more impactful institution with a purpose that stretches across four missions — education, research, service and care — and a promise that serves all 120 Kentucky counties.

- Today we encompass:
 - ~34,000 students, 26,000+ staff, 3,400+ faculty.
 - More than \$7 billion operating budget.
 - 16 degree-granting colleges, the Lewis Honors College, Graduate School and Libraries.
 - 900+ acres; more than 8.6 million square feet transformed into state-of-the-art facilities in the last 10+ years alone.



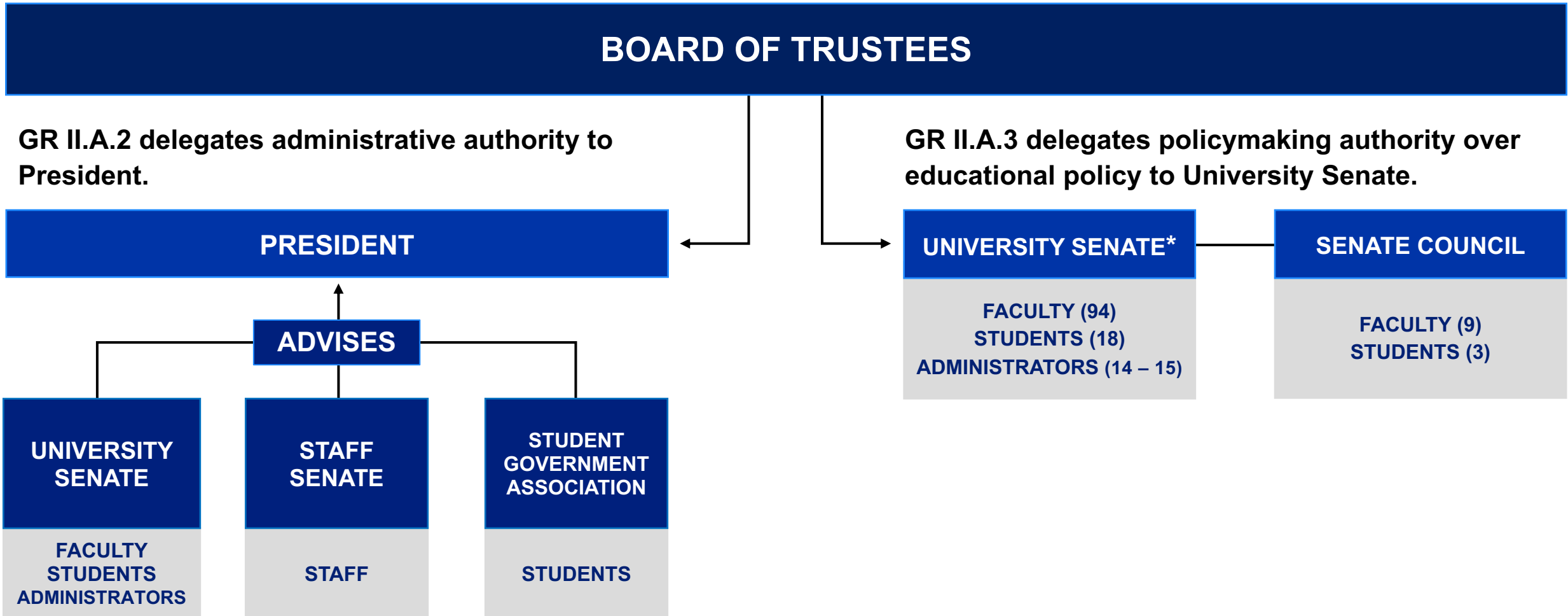
One of four commencement ceremonies to celebrate more than 4,000 graduates in May 2023.

UK Photo

MORE RESPONSIVENESS: SHARED GOVERNANCE

Current shared governance model

The left side of our current structure is similar to other institutions; the right side is where we differ the most with the Board delegating educational policymaking authority to the University Senate and its executive branch.



*GR IV.B: *The President is the Chair of the University Senate and shall be the presiding officer except as the President may delegate this function to the University Senate Council Chair.*

MORE RESPONSIVENESS: SHARED GOVERNANCE

Proposed revised shared governance structure

BOARD OF TRUSTEES

Final authority over all matters of the University including financial, educational and other policies.

GR III delegates administrative authority to President.

PRESIDENT

Chief executive officer of the University and has full authority and responsibility over the administration of the University.

ADVISES

STUDENT
GOVERNMENT
ASSOCIATION

STUDENTS

FACULTY
SENATE

FACULTY

STAFF
SENATE

STAFF

PRESIDENT'S
COUNCIL

STUDENTS
FACULTY
STAFF

Updating the Governing Regulations

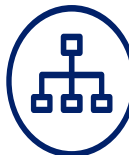
Key Updates



New GR I and VI created and GR II-V updated.



Governance bodies' structures and authority updated.



GRs VII-XIV transition to ARs to better reflect operationalization.

GR I. Declaration of Principles

GR II. The Board of Trustees

GR III. The President

GR IV. The Faculty's Primary Responsibility for the Credit-Bearing Curriculum

GR V. Shared Governance Bodies

GR VI. The President's Council

Current GR I: The University of Kentucky (Definition)

- Summarizes statutory authority granted to the University of Kentucky by the Kentucky Legislature.
- Describes colleges and programs that constitute the institution.
- Establishes University's "Vision, Mission and Values" as adopted by the Board of Trustees.
- Establishes Board's policies on matters related to University such as diversity, shared governance and use of University property and resources.

NEW

New GR I: Declaration of Principles

- The Board has final authority over all aspects of the University.
- The Board delegates its administrative authority to the President.
- Shared governance is “a bedrock principle and value of the University.”
- A commitment to academic freedom for the University community and delineation of what constitutes academic freedom are essential values.
- A commitment to exemplary ethical conduct is critical to the University.
- The Governing Regulations have supremacy over all rules and policies.

Current GR II: Governance of the University of Kentucky

Title: Governance of the University of Kentucky.

Board **delegates** “certain responsibilities” to governance bodies, including “**educational policymaking**” to **University Senate**.

Describes the authority, membership, committees and responsibilities of the Board of Trustees.

Outlines **membership and responsibilities**.

CHANGE

CHANGE

UPDATE

UPDATE

Revised GR II: The Board of Trustees

Title: The Board of Trustees.

Removes delegation of authority to University Senate. Clarifies that the Board “**has final authority over all matters of the University** including financial, educational and other policies of the University.”

Updates the authority, membership, committees and responsibilities of the Board of Trustees.

More clearly defines Board’s duties and responsibilities.

Current GR III: The President

Is not clear that President is responsible for the interpretation and administration of GRs and ARs.

Discusses **President's role** with the **University Senate**.

Describes the **role of the President**.

States President can **delegate** "any **authority**."

CHANGE

CHANGE

UPDATE

UPDATE

Revised GR III: The President

Clarifies **President is responsible for the interpretation and administration** of GRs and ARs.

Changes **University Senate to Faculty Senate** and specifies **President will consult with Faculty Senate**.

Updates the **roles and responsibilities of the President**.

Clarifies the authority the President can delegate.

Current GR IV: The University Senate

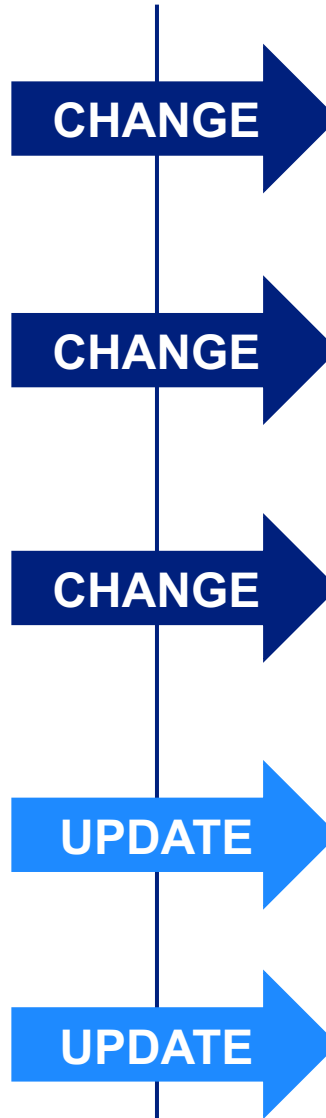
The **University Senate** makes final decisions for the University on curricula, courses, certificates and diplomas offered.

The **University Senate** is empowered to make final decisions on curricular issues including disputes between and among colleges.

Grants the University Senate the ability to determine “**broad academic policies of the University**” (e.g., the academic calendar).

Describes the **role of the University Senate**.

Title: The University Senate.



Revised GR IV: The Faculty's Primary Responsibility for the Credit-Bearing Curriculum

The **relevant department, school or college level faculty** shall make recommendations on credit-bearing curricula, courses, certificates and diplomas offered.

The Provost shall **consult with the Faculty Senate** on curricular issues including disputes between and among colleges.

Clarifies that faculty have primary responsibility for the credit-bearing curriculum **subject to GRs**.

Clarifies that the faculty “has primary responsibility for the **content, quality and effectiveness** of the credit-bearing curriculum.”

Title: The Faculty's Primary Responsibility for the Credit-Bearing Curriculum.

Current GRs

GR IV: Establishes **the University Senate**.

Current GRs are occasionally **ambiguous** regarding shared governance bodies' relationship with the Board of Trustees.

GR V: Establishes the **Staff Senate**.

GR XI: Establishes the **Student Government Association**.

CHANGE

CHANGE

UPDATE

UPDATE

New GR V: Shared Governance Bodies

Establishes the **Faculty Senate** as the representative body for University faculty and its advisory role to the University President.

Clarifies the Board of Trustees as **final authority**, and that all governing bodies are subject to the Governing Regulations.

Establishes the **Staff Senate** as the representative body for University staff and its advisory role to the University President.

Establishes the **SGA** as the representative body for University students and its advisory role to the University President.

New GR VI: The President's Council

Current GR VI: The University Assembly

- Establishes the University Assembly.
- Membership includes all faculty members of the University, including emeritus faculty, all staff employees, including retired staff employees, and all students.
- Meets upon request of President or University Senate.

NEW

- Establishes the President's Council, a "strategic advisory body providing guidance and recommendation to the President on a wide range of high-level issues critical to the success of the University of Kentucky."
- During its first year, the four seats representing students, faculty and staff on the Council will be held by:
 - Elected leader of each shared governance body.
 - Elected member of each shared governance body, chosen by the UK President from a list of five names submitted to the UK President from each shared governance body.
 - Student, staff and faculty member who is not an elected member of the shared governance bodies, chosen by the UK President from a list of five names submitted to the UK President from each shared governance body.
 - Student, staff and faculty member chosen by the President.
- Final composition of the President's Council will be considered as operational ARs are promulgated.
- All members of the council will serve one-year terms but can be re-appointed.

Administrative Regulations

- ARs are how the University operationalizes the GRs.
- Subordinate to the GRs but superior to all other rules and processes.
- ARs should be specific but allow for interpretation and application.
- Next steps:
 - Transition GRs VII-XIV to new ARs.
 - Update to reflect the new university governance structure.

Governing Regulations VII – XIV

CURRENT GRs

GR VII: University Organization

GR VIII: University Appointments

GR IX: Reviews of Organizational Units and Their Administrative Officers

GR X: Regulations Affecting Employment

GR XI: Student Affairs

GR XII: University of Kentucky Development Council

GR XIII: University Regulations

GR XIV: Ethical Principles and Code of Conduct



CHANGES

Content moved to an AR.

Some content moved to new GR (e.g., new GR III includes President appointment/evaluation) while the remaining content moved to an AR.

Content moved to an AR.

Content moved to an AR.

Some content moved to new GR (e.g., new GR V includes Student Government Association) while the remaining content moved to an AR.

Previously eliminated.

Content moved to an AR.

Some content moved to new GR (e.g., new GR I includes values and principles) while the remaining content moved to an AR.