

UNIVERSITY OF KENTUCKY BOARD OF TRUSTEES

Eric N. Monday, Executive Vice President for Finance and Administration and Co-Executive Vice President for Health Affairs



Agenda

- EVPHA Update
 - Facility update – Albert B. Chandler Hospital expansion
 - FY24 Goal performance and proposed FY25 goals
 - FY25 Organization Quality Improvement Plan – UHCCR 1
 - Financial and operational update
 - FYTD24 YTD April Key Statistics and Financials
 - FY25 Operational and Financial Plan
 - Five-year forecast
 - Finance Committee Recommendations (FCRs)
- Privileges and appointments

The image shows the exterior of a building at the University of Kentucky. The building features a prominent stone archway with the words "UNIVERSITY OF KENTUCKY" carved into it. Above the archway are two large, multi-paned arched windows. A large green tree is positioned in front of the building, partially obscuring the archway. The building's facade is a mix of red brick and light-colored stone. Two black lantern-style light fixtures are mounted on the stone pillars flanking the archway. The overall scene is captured in a slightly dim, late-afternoon or early-evening light.

UNIVERSITY OF KENTUCKY

ALBERT B. CHANDLER HOSPITAL EXPANSION

OUR WHY: ADVANCING KENTUCKY

**ADVANCED
SUBSPECIALTY CARE
FOR KENTUCKY
AND BEYOND**

TAKING CARE OF OUR PEOPLE AND OUR PARTNERS

DISTINCTION AS AN **ACADEMIC** **HEALTH SYSTEM**

PROJECT GUIDING PRINCIPLES

1. People-centered
2. Supportive of our partners
3. Academic and research mission-focused
4. Technologically advanced and innovative
5. UK HealthCare aspiration

PAVILION A PROGRAMMING

2005-2026

1.2 million sq. ft.

511 beds *(32-bed units)*

Imaging

15 operating rooms

Interventional radiology

Emergency services

\$1 billion

\$650 million debt



PAVILION A PROGRAMMING

STAGE I

Through Emergency Services opening, July 14, 2010

STAGE II

July 2010 through Chandler Pavilion A ground floor, concourse, patient floors 6 & 7 opening, May 2011

STAGE III

Phased “fit out” of all floors. Completed with Floor 12, February 4, 2024

Emergency Services expansion and completion of eight additional operating suites by 2026

2005

DISCHARGES:
22,269

REVENUE:
\$460 million

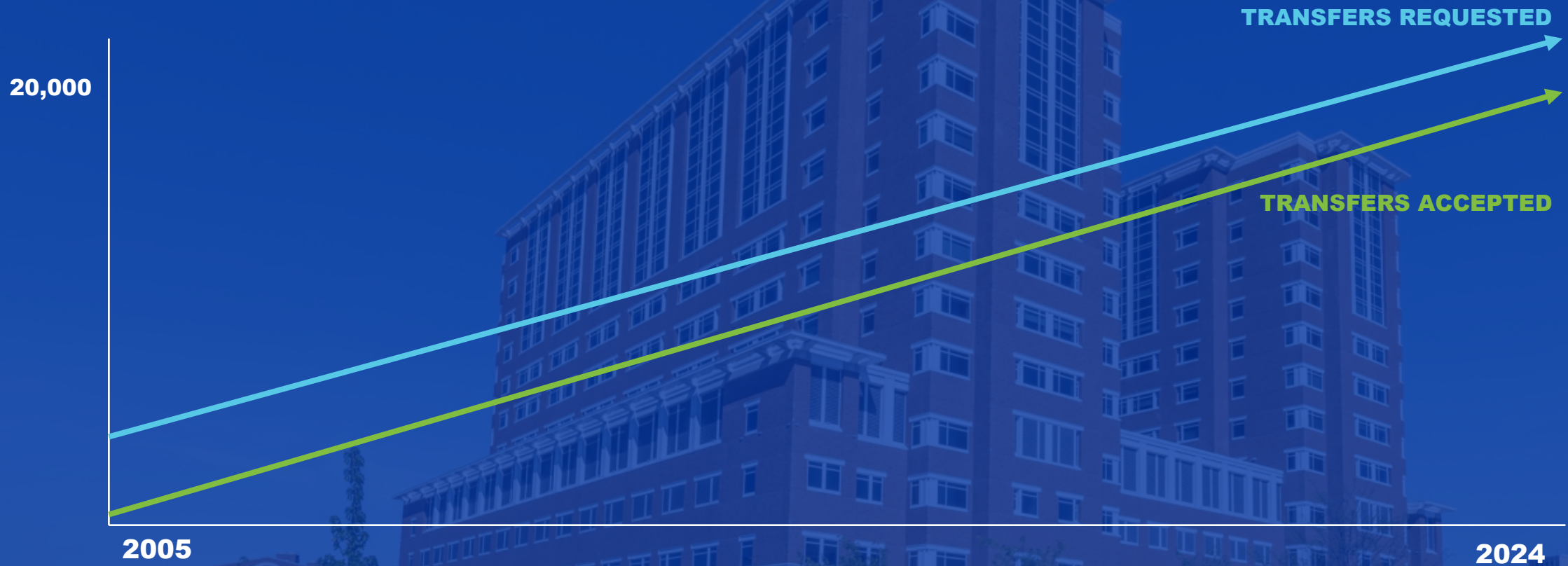
2024*

DISCHARGES:
45,345

REVENUE:
\$3.3 billion

**Projected*

PAVILION A PROGRAMMING: TRANSFERS



Accepted 19,333 patients*
Turned away 4,110 patients*

**Previous 12 months*

CHANDLER EXPANSION PROGRAMMING

2023-2033
Accelerated strategy

900 beds
(24-bed units)

2.1 million
sq. ft.

Emergency
services

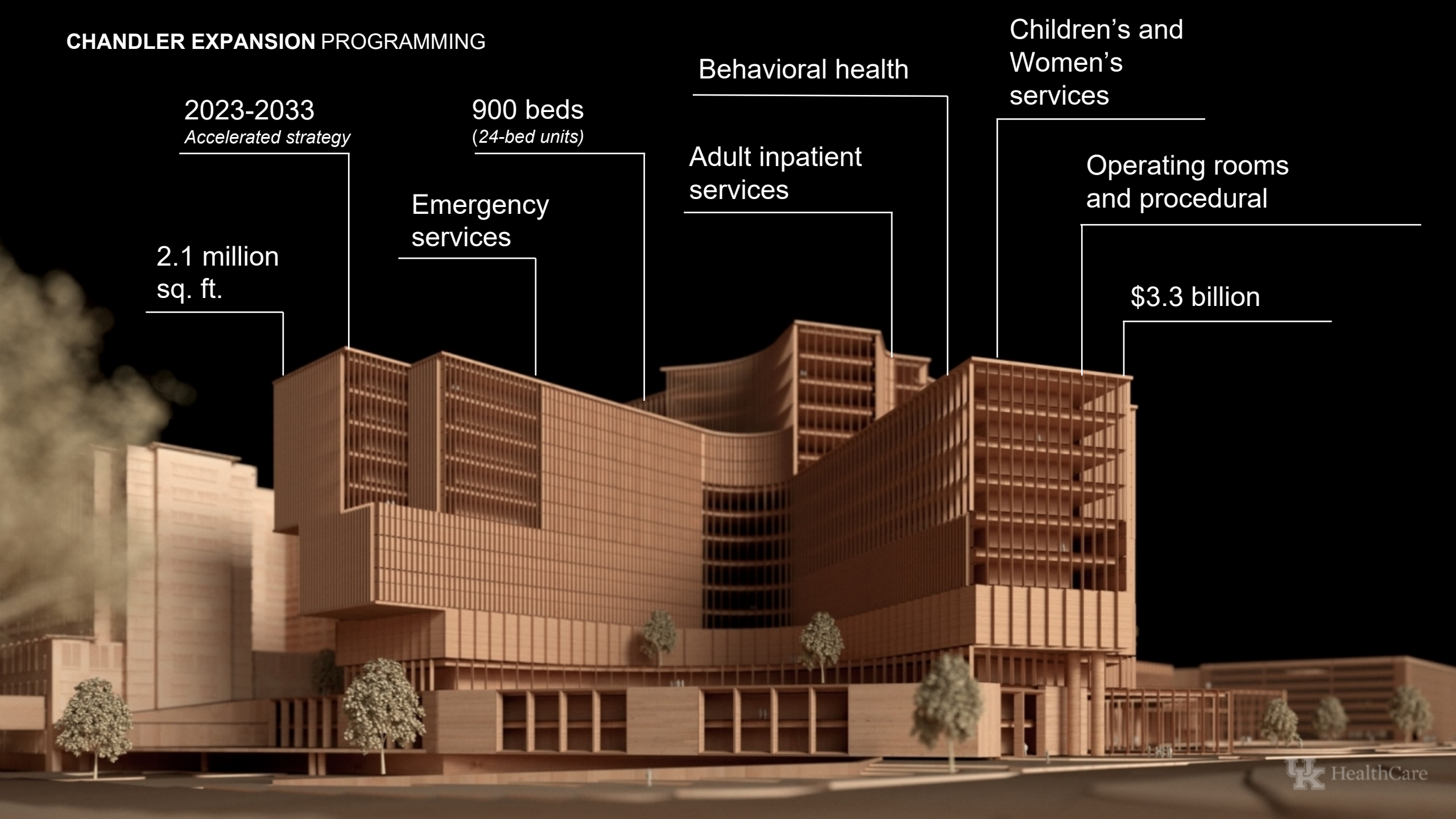
Behavioral health

Adult inpatient
services

Children's and
Women's
services

Operating rooms
and procedural

\$3.3 billion



CHANDLER EXPANSION PROGRAMMING

Late 2023

PRE-DESIGN

Programming and concept planning; department walk-throughs

2024/2025

DESIGN

Schematic design; design development

2025/2026

CONSTRUCTION DOCUMENTS

Beginning 2027

CONSTRUCTION

Permitting; construction; furniture and equipment installation; commissioning

Beginning 2029

OCCUPANCY

Multiple phases through 2033

50 PEOPLE

SUPPORT AREAS

65 PEOPLE

INPATIENT

35 PEOPLE

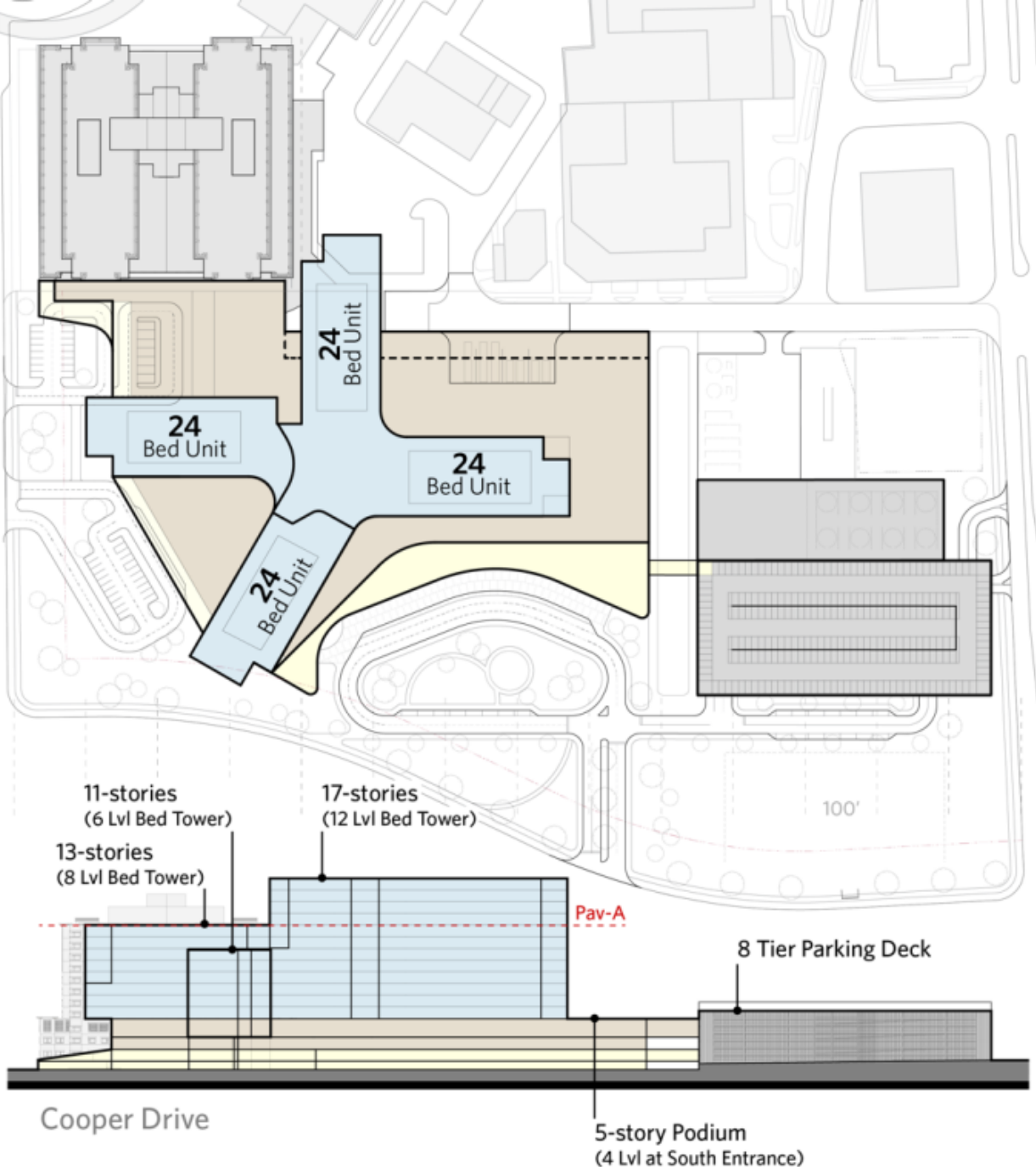
CORE CLINICAL SERVICES



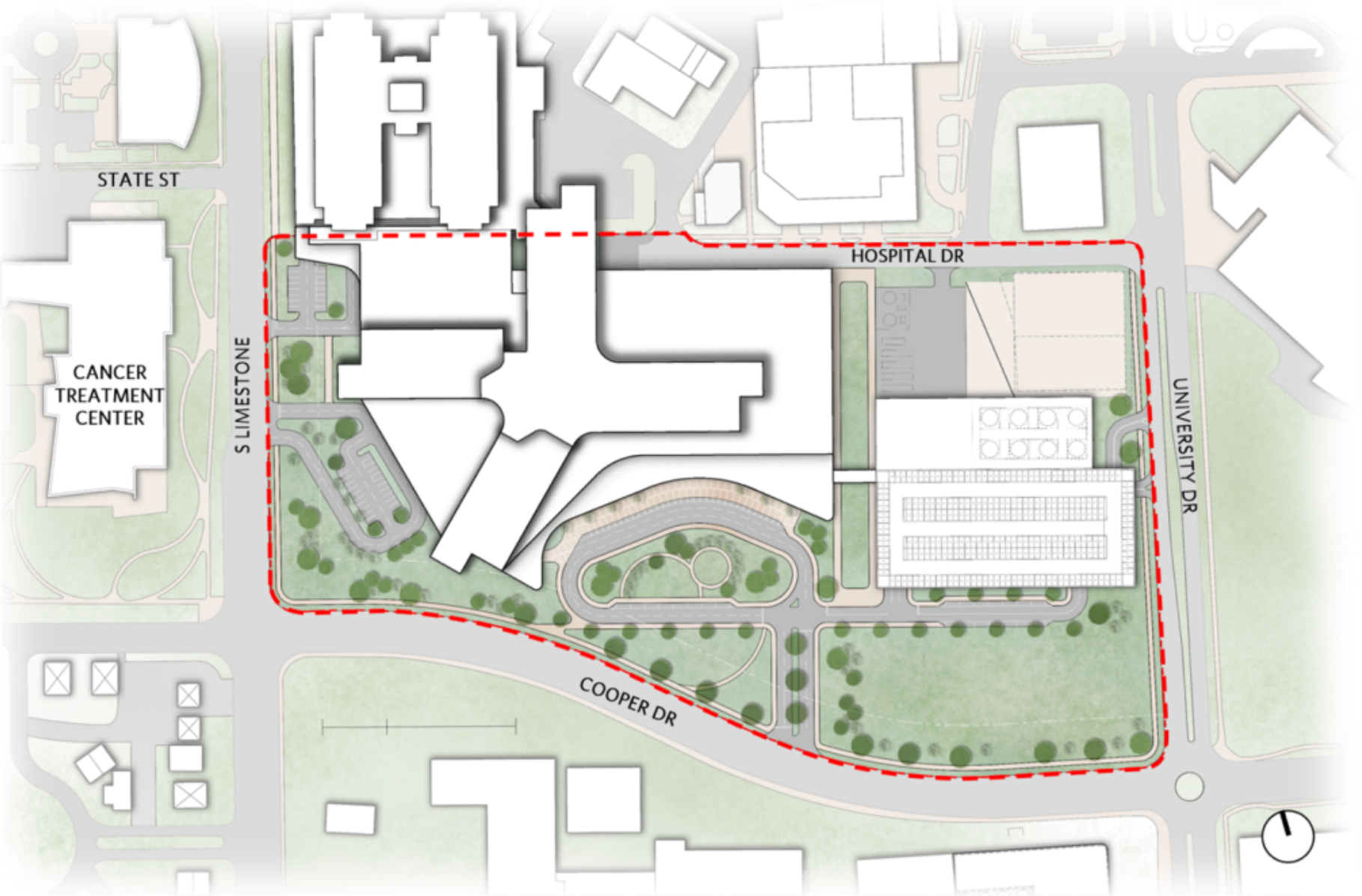
CHANDLER
EXPANSION
CONCEPT DESIGN



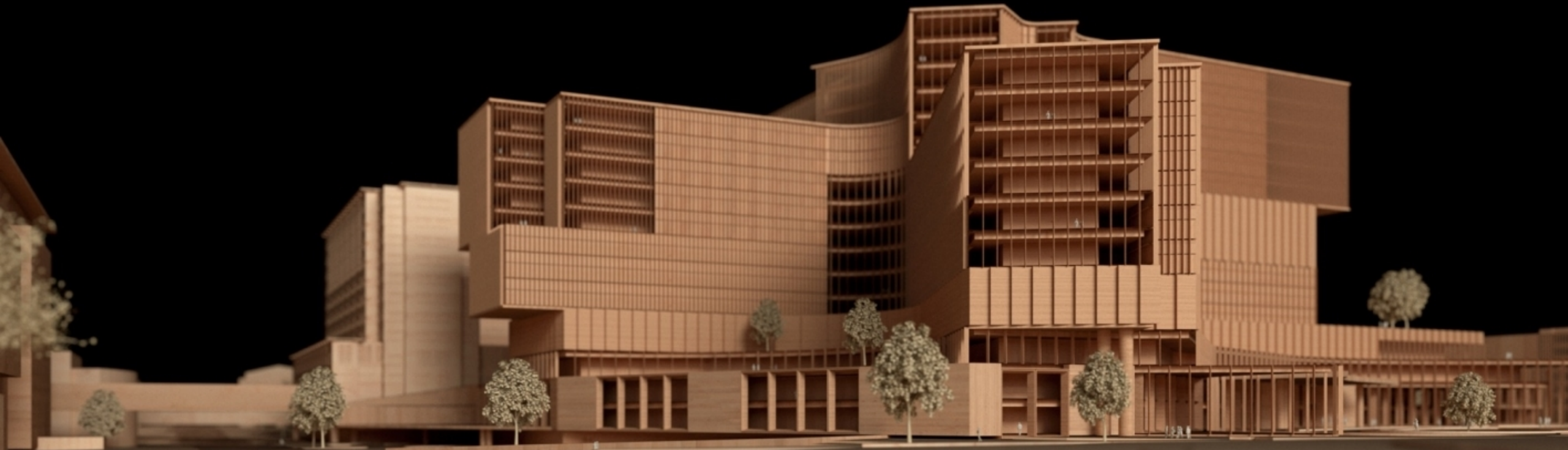
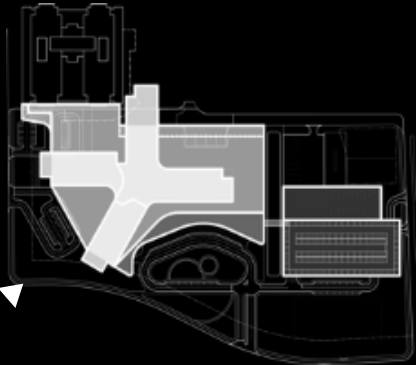
**CHANDLER EXPANSION
CONCEPT DESIGN**



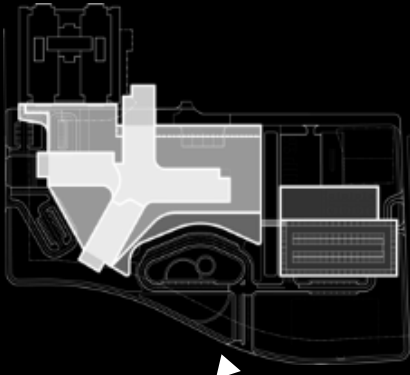
CHANDLER EXPANSION CONCEPT DESIGN



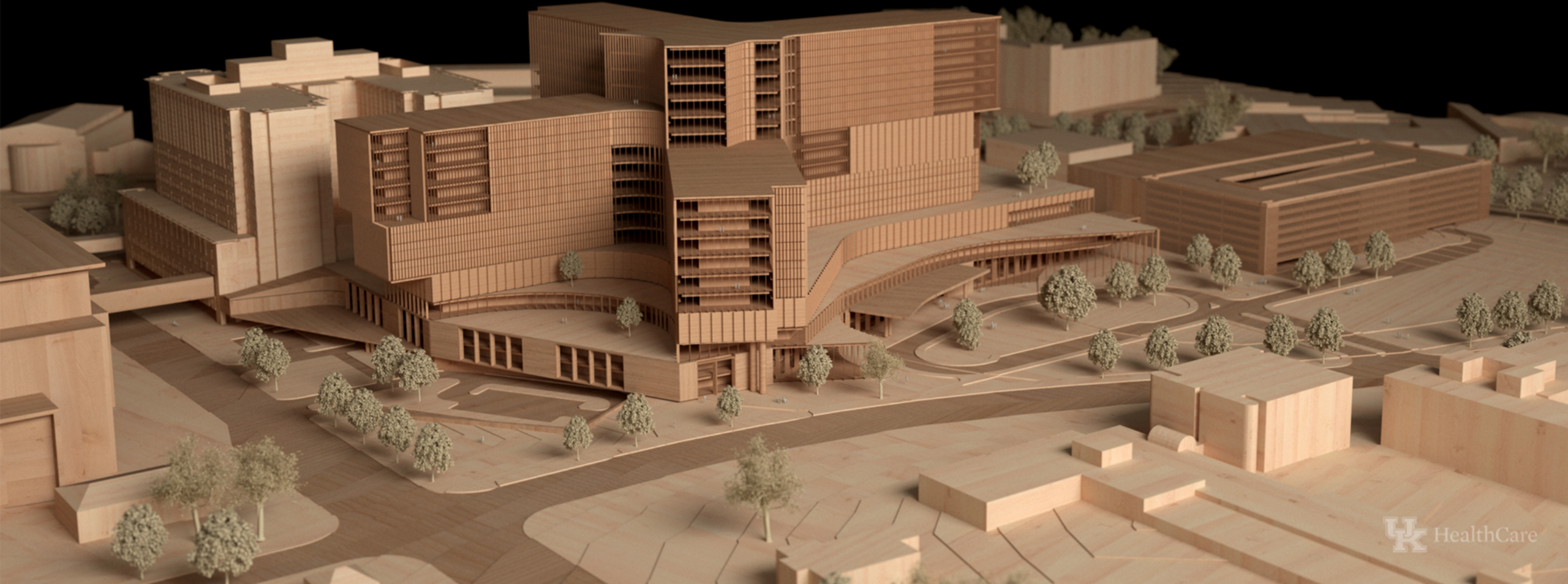
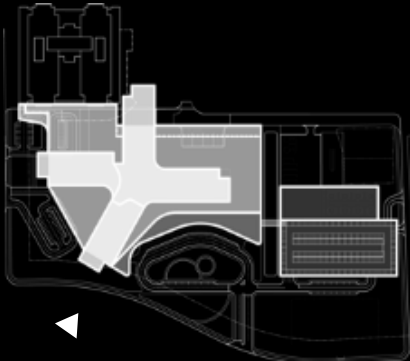
CHANDLER EXPANSION CONCEPT DESIGN



CHANDLER EXPANSION CONCEPT DESIGN



CHANDLER EXPANSION CONCEPT DESIGN



QUESTIONS

