

FCR 9

Office of the President
September 5, 2014

Members, Board of Trustees:

IMPROVE/UPGRADE ALUMNI DRIVE CAPITAL PROJECT

Recommendation: that the Board of Trustees approve the initiation of the Improve/Upgrade Alumni Drive Capital Project.

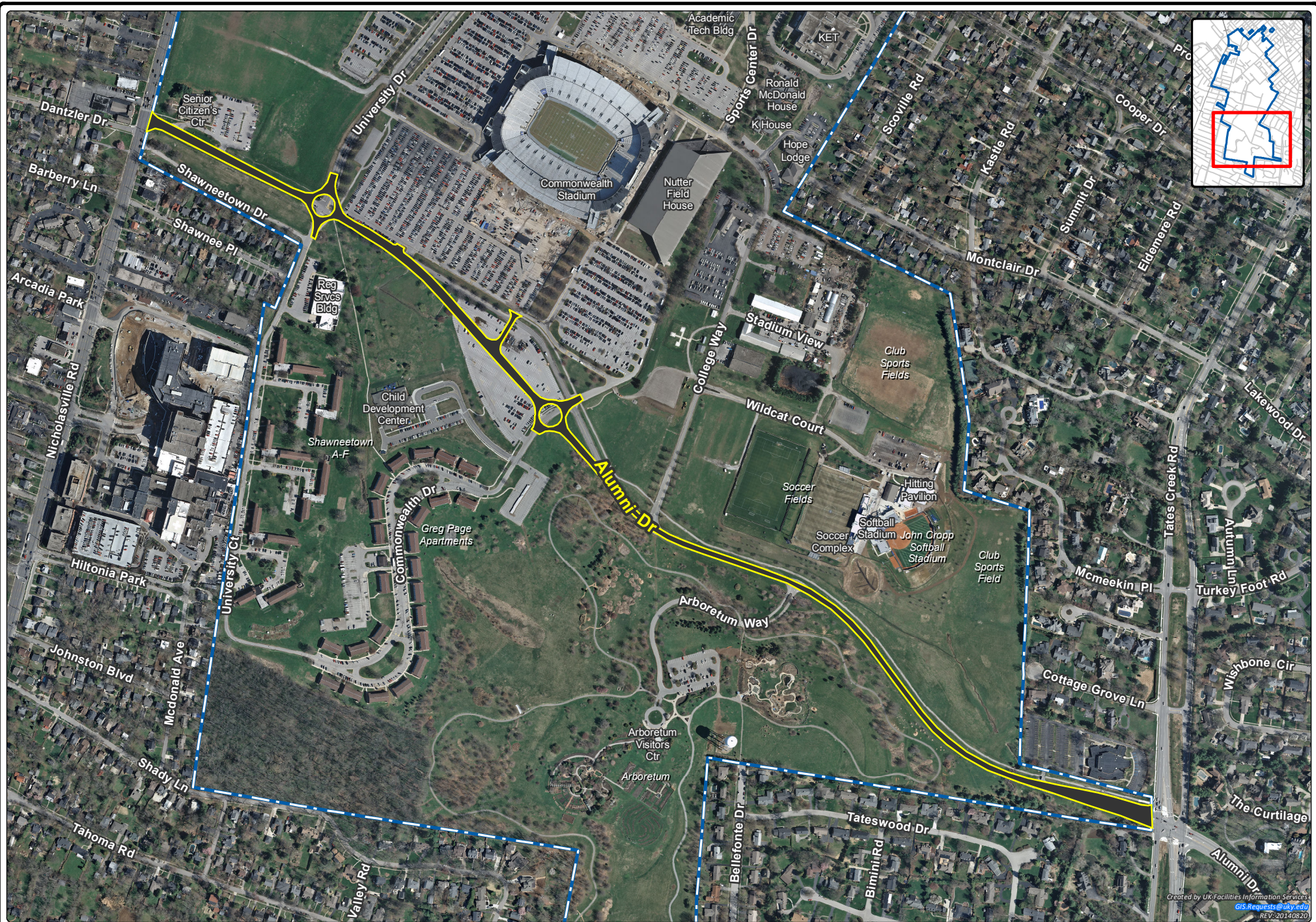
Background: Alumni Drive runs east-west along the southern portion of the University between Nicholasville and Tates Creek roads. The road has two twelve-foot travel lanes with narrow three-foot shoulders for the majority of the route. Alumni Drive serves both as a local access route for the surrounding campus, and as a cut-through connector route between the two principal arterials of Nicholasville and Tates Creek roads. This capital project will address several hazardous conditions along this thoroughfare.

The Board of Trustees approved the Expand and Renovate Commonwealth Stadium and the Construct UK/Nicholasville Road Flood Mitigation capital projects in March 2013 and June 2013 respectively. The timing of both these capital projects that are adjacent to Alumni Drive has created an opportunity to complete needed upgrades and improvements while limiting the disturbance to the area and providing the greatest efficiencies in both cost and timing.

Currently, the right-of-way for Alumni Drive is on University-owned property. However, it is operated and maintained by the Lexington Fayette Urban County Government. The University will manage this improvement project in cooperation with the Lexington Fayette Urban County Government and the Kentucky Transportation Cabinet.

The Kentucky Transportation Cabinet included this project in their 2014-16 Biennial Highway Construction Plan which was authorized by the 2014 Kentucky General Assembly. The scope of the project is \$5,000,000 and will be funded with state road funds.

Action taken: Approved Disapproved Other _____



Created by UK Facilities Information Services
 GIS Requests @ uky.edu
 REV: 20140820

