

FCR 9

Office of the President
June 19, 2015

Members, Board of Trustees:

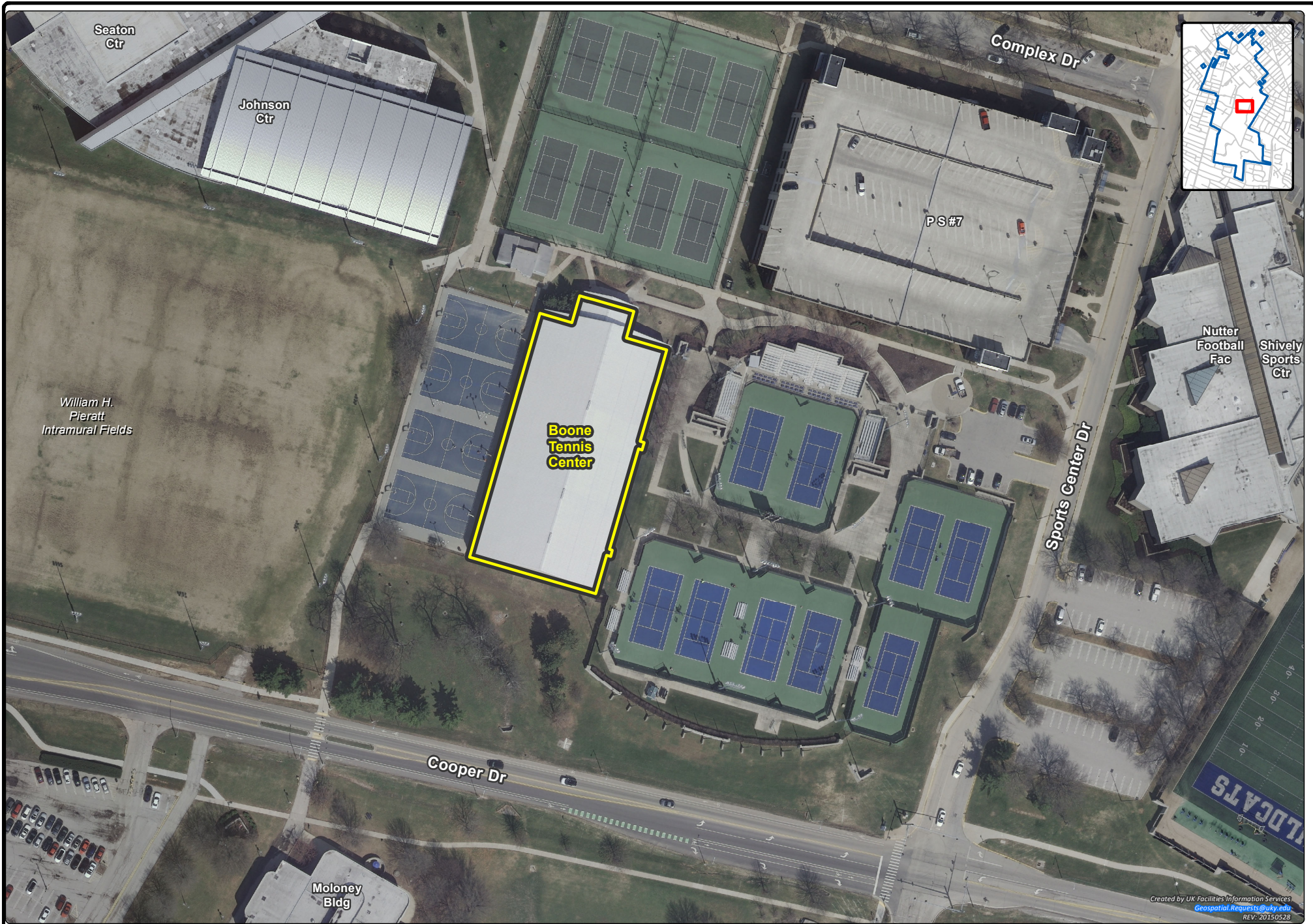
DESIGN PHASE OF THE EXPAND HILARY J. BOONE TENNIS CENTER
CAPITAL PROJECT

Recommendation: that the Board of Trustees approve the initiation of the Design Phase of the Expand Hilary J. Boone Tennis Center Capital Project.

Background: This project will initiate the design phase of the expansion of the Hilary J. Boone Tennis Center (Boone Tennis Center). The current facility has an insufficient number of courts to fully accommodate collegiate matches. The expansion will add two tennis courts and more spectator seating on the south end of the Boone Tennis Center. Also, the project will add new team offices; player locker rooms; a player lounge and study area; spectator rest rooms; and many system-related upgrades such as HVAC, lighting, and roof structure.

Pursuant to Administrative Regulation 8:2, any capital project with an estimated cost of \$600,000 or more must be approved by the Board prior to initiation. The cost of the design is not expected to exceed \$800,000, well within the project's legislative authorization of \$8,000,000. The project will be financed by Athletics using private funds. The design phase will include a detailed assessment of the facility and yield schematic documents including advanced preliminary concepts and more detailed cost estimates for the project. Prior to the initiation of construction, this project will be brought to the Board of Trustees for approval.

Action taken: Approved Disapproved Other _____



Created by UK Facilities Information Services
Geospatial.Requests@uky.edu
REV: 20150528



FCR 9 - DESIGN PHASE OF THE EXPAND HILARY J. BOONE TENNIS CENTER CAPITAL PROJECT

