

FCR 8

Office of the President
May 2, 2017

Members, Board of Trustees:

APPROVAL OF LEASE
(COLLEGE OF MEDICINE-BOWLING GREEN CAMPUS)

Recommendation: that the Board of Trustees authorize the Executive Vice President for Finance and Administration to negotiate and execute a lease between the University of Kentucky and Bowling Green Warren County Community Hospital Corporation (dba The Medical Center) for space located at 399 US31W ByPass, Bowling Green, KY 42101.

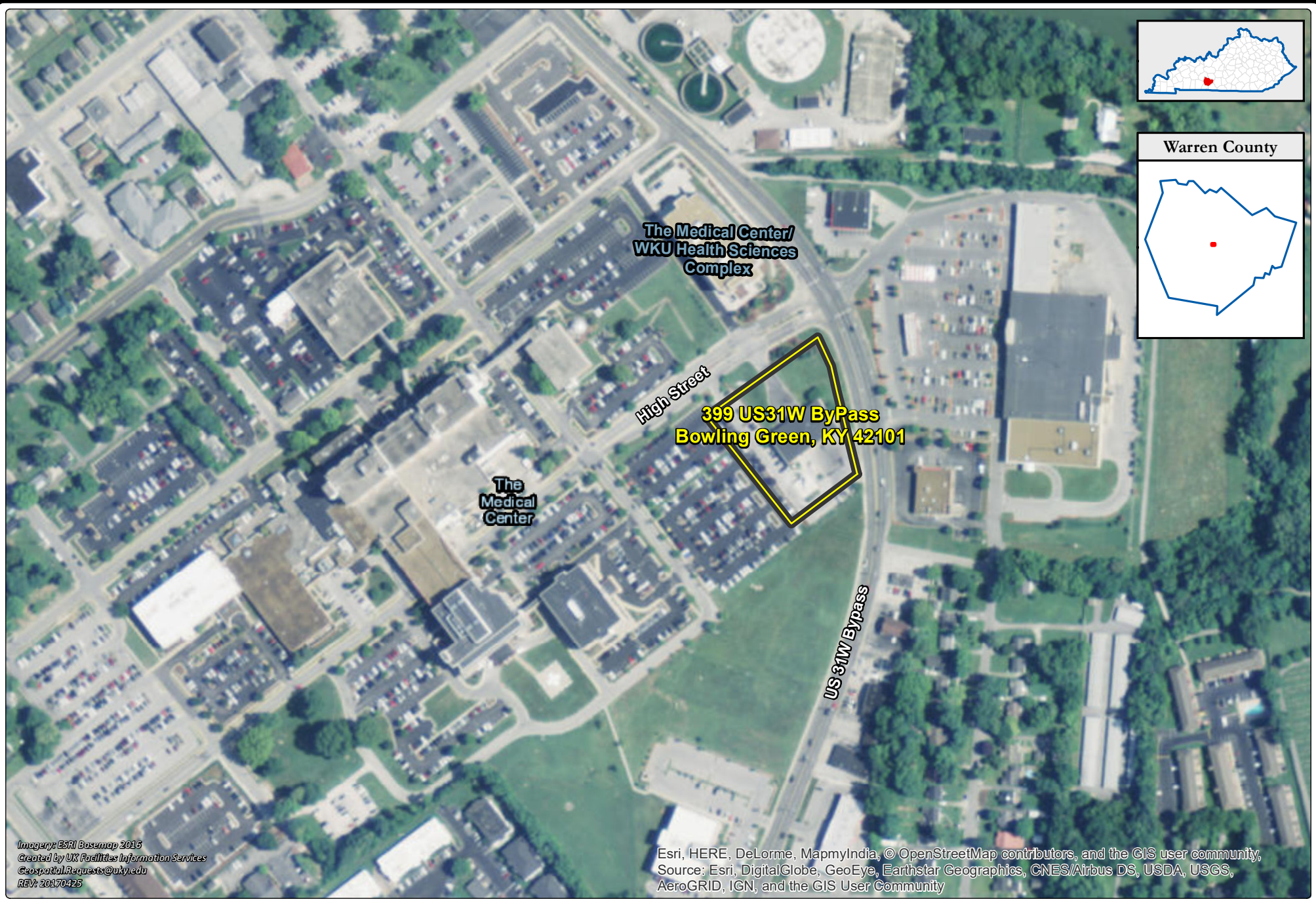
Background: At its October 2006 meeting, the Board amended Governing Regulation II.A.6(g) requiring that all leases in excess of \$200,000 annually be approved by the Board of Trustees. The President or his designated representative is authorized to enter into leases and easements not exceeding \$200,000 in value.

The UK College of Medicine has reached its capacity for students in its classrooms and clinical settings in Lexington. On February 18, 2016, the University of Kentucky entered into a Memorandum of Understanding with Western Kentucky University and Bowling Green Warren County Community Hospital Corporation, dba The Medical Center at Bowling Green, to establish a satellite campus of the UK College of Medicine in Bowling Green. The regional medical campus will allow for an approximate 22% increase in the College's class size, and will benefit the Commonwealth through expanded matriculation of physicians and concurrent expansion of medical services provided in the region, much of which is medically underserved and experiencing a physician shortage.

The leased space will support the UK College of Medicine-Bowling Green Campus initiative and house the delivery of didactic educational components and primary clinical training activities. The 24,000 square feet of leased space will provide both administrative and academic space, classrooms, multi-purpose rooms, a patient exam room suite with observation room, simulation lab that includes an observation room, and lounge/locker room area. The \$696,000 of annual rent will be funded with agency funds. w

Kentucky Revised Statute (KRS) 48.111 requires legislative authorization of all leases with an annual cost of \$200,000 or more. The lease has been authorized by the Kentucky General Assembly through HB 471, which was enacted in March 2017 as an amendment to the 2016-18 Executive Budget of the Commonwealth. Contingent upon approval from the Board of Trustees, the lease will be reported to the Capital Projects and Bond Oversight Committee.

Action taken: Approved Disapproved Other _____



Imagery: ESRI BaseMap 2015
Created by UK Facilities Information Services
GeospatialRequests@uky.edu
REV: 20170425

Esri, HERE, DeLorme, MapmyIndia, © OpenStreetMap contributors, and the GIS user community,
Source: Esri, DigitalGlobe, GeoEye, EarthStar Geographics, CNES/Airbus DS, USDA, USGS,
AeroGRID, IGN, and the GIS User Community



**FCR 8 - APPROVAL OF LEASE
(COLLEGE OF MEDICINE-BOWLING GREEN CAMPUS)**

