

FCR 17

Office of the President
June 17, 2022

Members, Board of Trustees:

EMERGENCY REPLACEMENT OF THE GRAIN AND FORAGE CENTER OF EXCELLENCE CAPITAL PROJECT

Recommendation: that the Board of Trustees approve the initiation of the bidding and construction phase of The Grain and Forage Center of Excellence as an emergency project.

Background: Pursuant to Administrative Regulation 8:2, any capital project with an estimated scope of \$1,000,000 or more must be approved by the Board prior to initiation.

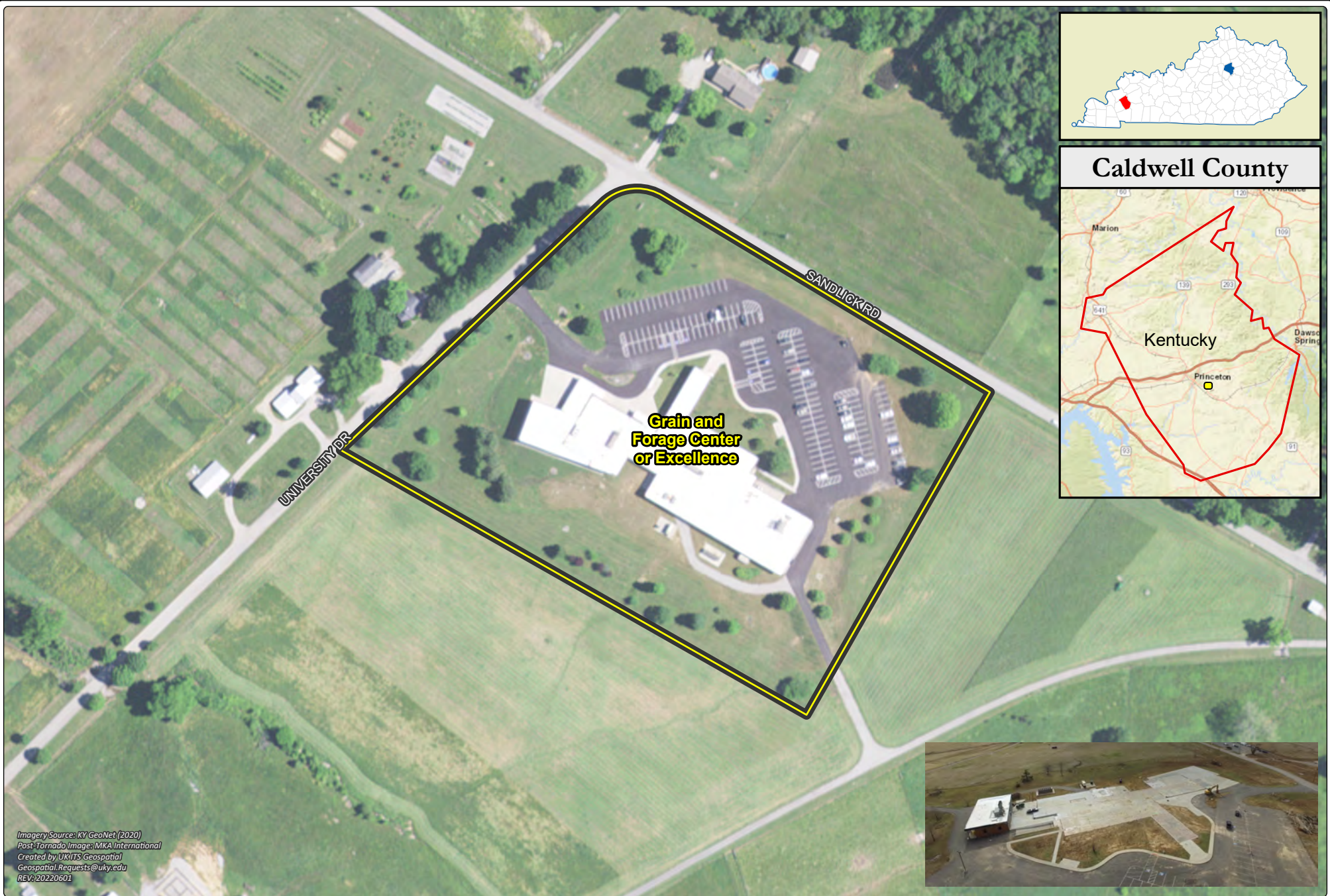
On December 10, 2021, the Grain and Forage Center of Excellence and Princeton Research Farm (UKREC) received a direct hit from an EF-4 tornado with sustained winds of an estimated 190 MPH. The devastation included the destruction of most of the research facilities including the 58,000 square foot Grain and Forage Center building which was completed in February 2020. The loss of facilities impacted 11 academic departments/administrative units and more than 70 full and part-time employees. The planned new facility will replace the demolished building. The replacement facility will allow the university to continue research on intensive agricultural practices, study water quality issues and help define the environmental footprint of intensive agriculture. This ultimately benefits Kentucky producers by providing new applications and technologies resulting in increased yields, reduced inputs and higher economic returns.

The project is planned to include approximately 58,000 square feet for administrative, conference, learning, laboratory and office areas.

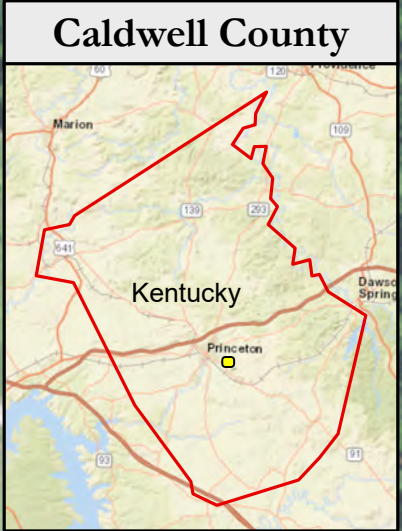
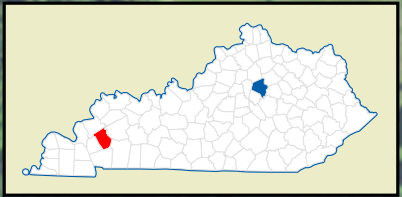
Pursuant to KRS §45.750(1)(g), this project qualifies as an Emergency Repair, Maintenance or Replacement Project as it is necessitated by damage resulting from a disaster. Contingent upon approval by the Board, the emergency capital project will be reported to the Capital Projects and Bond Oversight Committee

This \$38,000,000 project is authorized by emergency authority and will be funded with insurance reimbursement.

Action taken: Approved Disapproved Other



Imagery Source: KY GeoNet (2020)
Post-Tornado Image: MKA International
Created by UKITS Geospatial
Geospatial.Requests@uky.edu
REV: 20220601



FGR 17 - EMERGENCY REPLACEMENT OF THE GRAIN AND FORAGE CENTER OF EXCELLENCE CAPITAL PROJECT

