

FCR 12

Office of the President
December 13, 2016

Members, Board of Trustees:

RENOVATE/IMPROVE UK HEALTHCARE FACILITIES
CAPITAL PROJECT (SIMULATION CENTER)

Recommendation: that the Board of Trustees approve the initiation of the Renovate/Improve UK HealthCare Facilities Capital Project (Simulation Center).

Background: Pursuant to Administrative Regulation 8:2, any capital project with an estimated cost of \$1,000,000 or more must be approved by the Board prior to initiation. This project will renovate vacant space on the second floor of Pavilion H to create an expanded inter-professional state-of-the-art simulation center for the training of medical students, medical residents, faculty, and staff.

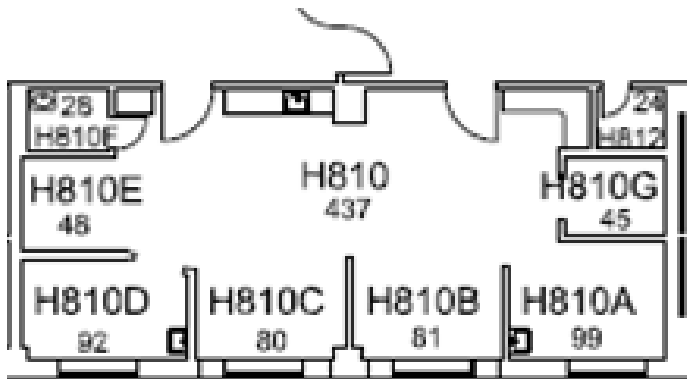
Simulation training is a requirement of the Liaison Committee on Medical Education (LCME) which oversees medical student training, and the Accreditation Council for Graduate Medical Education (ACGME) which oversees resident training. The existing simulation center is currently confined to one room on the eighth floor of Pavilion H and no longer meets the training needs of the University.

The new UK HealthCare Simulation Center for Advanced Clinical Skills will include a multipurpose room for task simulation (learning discrete skills) and rooms designed to simulate care environments. Further, the Center will expand simulation opportunities with the inclusion of new high fidelity simulators, task simulators, and Advanced Cardiac Life Support (ACLS) manikins. Participants will be provided the opportunity to hone skills necessary to improve the safety and effectiveness of patient care, refine advanced techniques, and interact with other professionals.

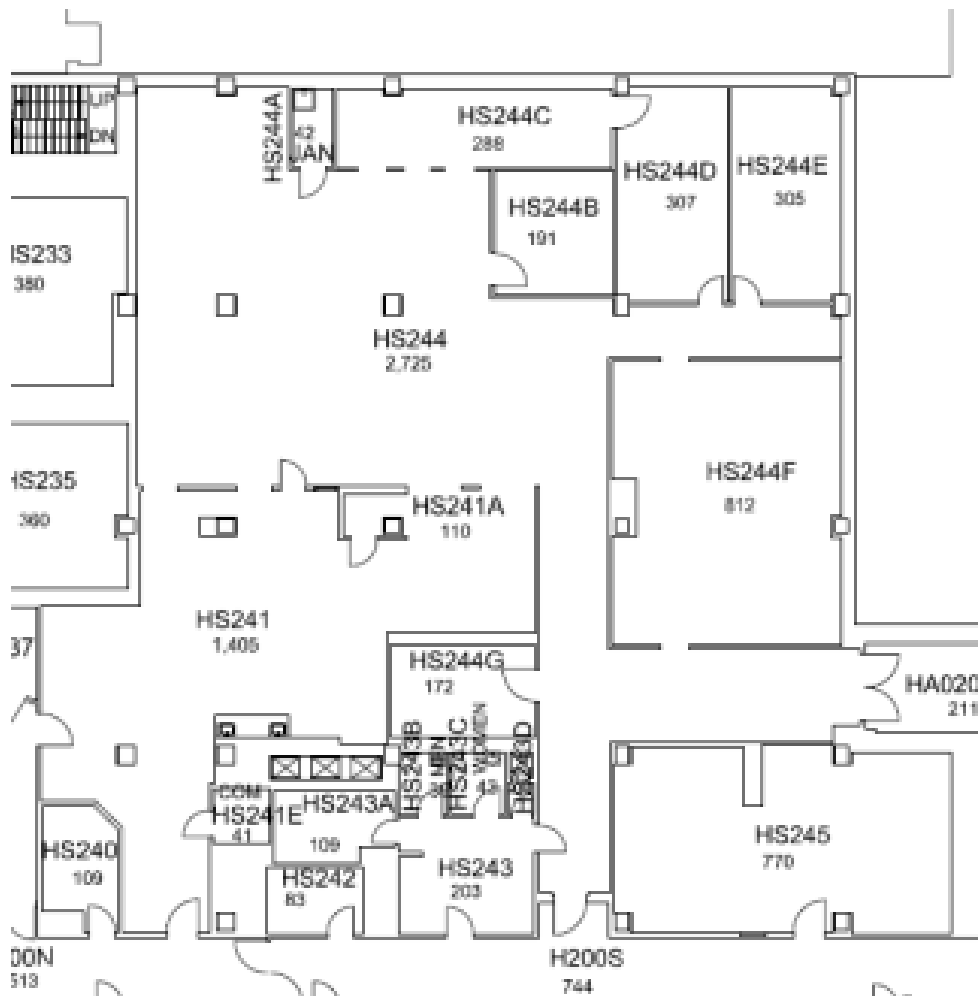
The scope of this project is \$5,500,000 and will be funded with agency funds. The project has been authorized by the 2016 Session of the Kentucky General Assembly as part of the Improve UK HealthCare Facilities - Chandler Hospital pool projects.

Action taken: Approved Disapproved Other _____

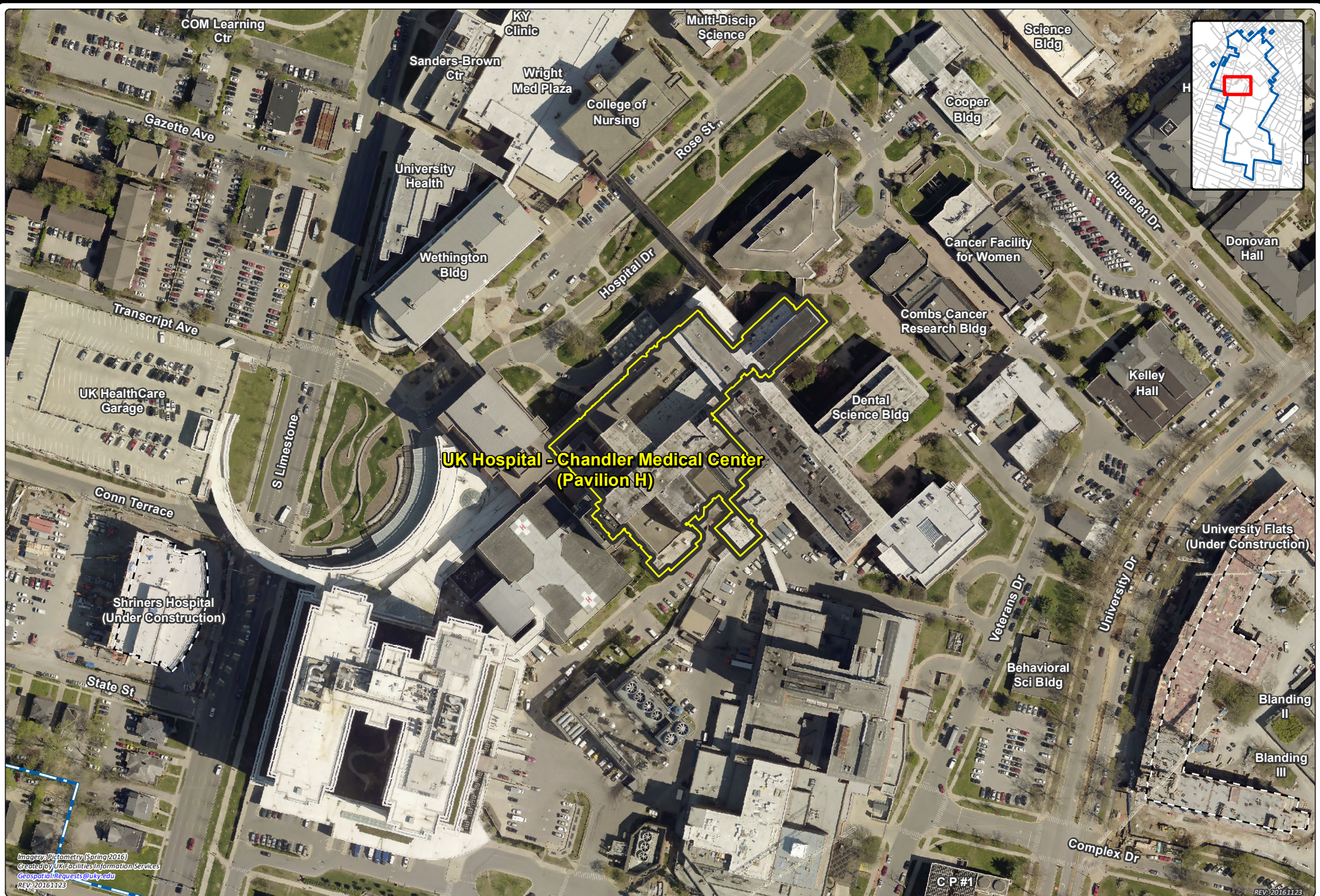
Current Location – 882sf



Proposed Location – approx. 5745sf*



* Does not include the two study rooms (HS244D/HS2544E) at the back. Function yet to be determined – if incorporated it would add 612sf.



Imagery: Pictometry (Spring 2016)
Created by: UK Facility Information Services
Geospatial Requests: @uky.edu
REV: 20161123

REV: 20161123



FCR 12 - RENOVATE/IMPROVE UK HEALTHCARE FACILITIES CAPITAL PROJECT (SIMULATION CENTER)

