

FCR 10

Office of the President
September 13, 2024

Members, Board of Trustees:

CONSTRUCT AGRICULTURE RESEARCH FACILITY 2 (GREENHOUSE,
HEADHOUSE AND RENOVATION OF EXISTING SEEDHOUSE)
CAPITAL PROJECT

Recommendation: that the Board of Trustees approve the initiation of the Construct Agriculture Facility 2 (Greenhouse, Headhouse and Renovation of Existing Seedhouse) capital project.

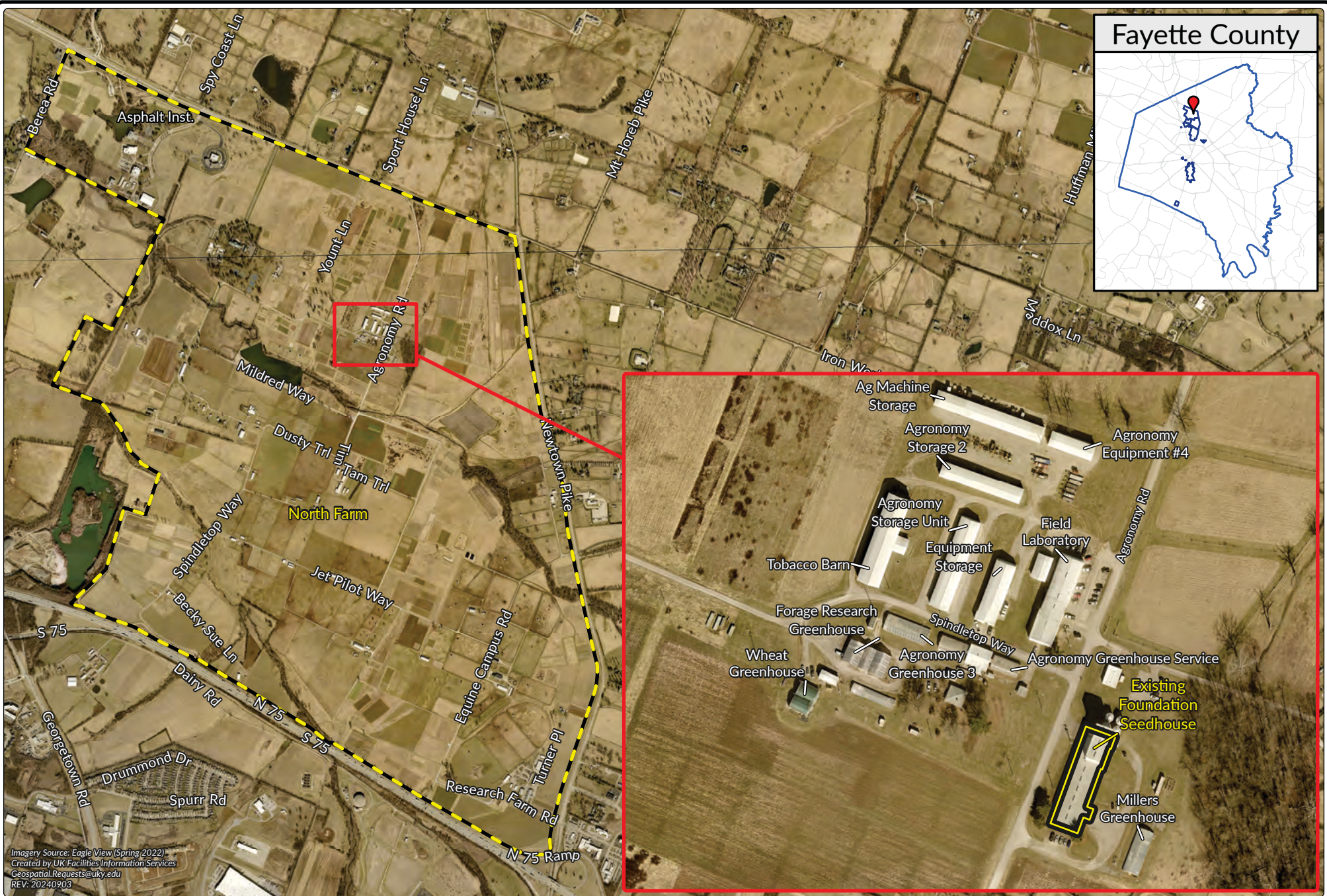
Background: Pursuant to Administrative Regulation 8:2, any capital project with an estimated scope of \$1,000,000 or more must be approved by the Board prior to initiation.

This project will initiate the design and construction of an approximately 18,000 square foot Greenhouse/Headhouse research complex for the Martin-Gatton College of Agriculture, Food and Environment (CAFE). The existing greenhouse complex must be relocated to accommodate the expansion of the UKHC Patient Care Facility on the north side of Cooper Drive.

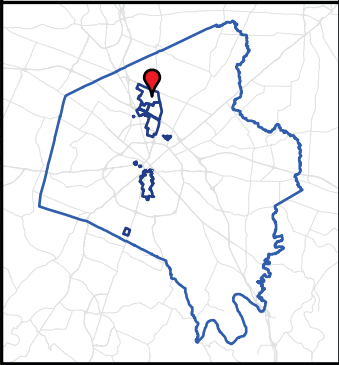
The project will construct an approximate 15,000 square foot greenhouse facility and an adjoining approximate 3,000 square foot headhouse. The new facility will be located at CAFE's North Farm which is located north of Lexington, Kentucky, within the boundaries of Newtown Pike, Iron Works Road and Interstate 75. Additionally, this project will renovate the existing 13,420 square foot Kentucky Foundation Seedhouse building located on CAFE's North Farm, incorporating it into this new facility.

This \$23,000,000 project, authorized by the 2024 Kentucky General Assembly, is within the total legislative authorization of \$75,000,000 and will be funded with agency funds.

Action taken: Approved Disapproved Other _____



Fayette County



Imagery Source: EagleView (Spring 2022)
 Created by UK Facilities Information Services
 Geospatial.Requests@uky.edu
 REV: 20240903



FCR 10 - CONSTRUCT AGRICULTURE RESEARCH FACILITY 2 (GREENHOUSE, HEADHOUSE AND RENOVATION OF EXISTING SEEDHOUSE) CAPITAL PROJECT

