

# UNIVERSITY OF KENTUCKY BOARD OF TRUSTEES

Eric N. Monday, Executive Vice President for Finance and Administration  
and Co-Executive Vice President for Health Affairs



## EVPFA REPORT

### What we will cover:

- FCRs Reflect Our Momentum
- Investments to Enhance Technology
- Gifts to Advance Kentucky



## FCRs Reflect UK's Momentum to Fulfill its Mission

- 24 FCRs demonstrate momentum across campus to work with partners to advance Kentucky by improving the health of our state.



## Investments to Enhance Technology

- Improvements to Information Technology (IT) systems and infrastructure, including Systems Applications and Products in Data Processing (SAP) upgrades to help bridge UK HealthCare and University Business functions.

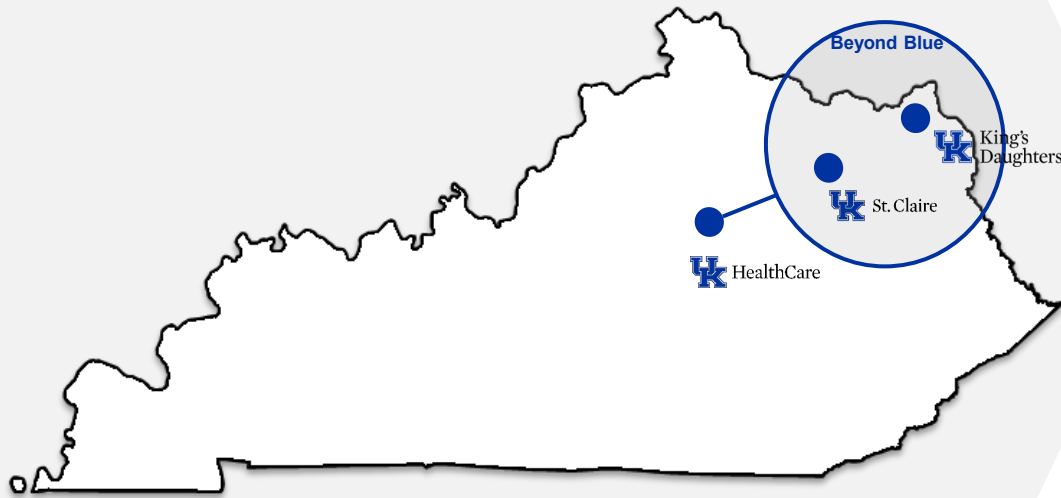


# EVPFA REPORT

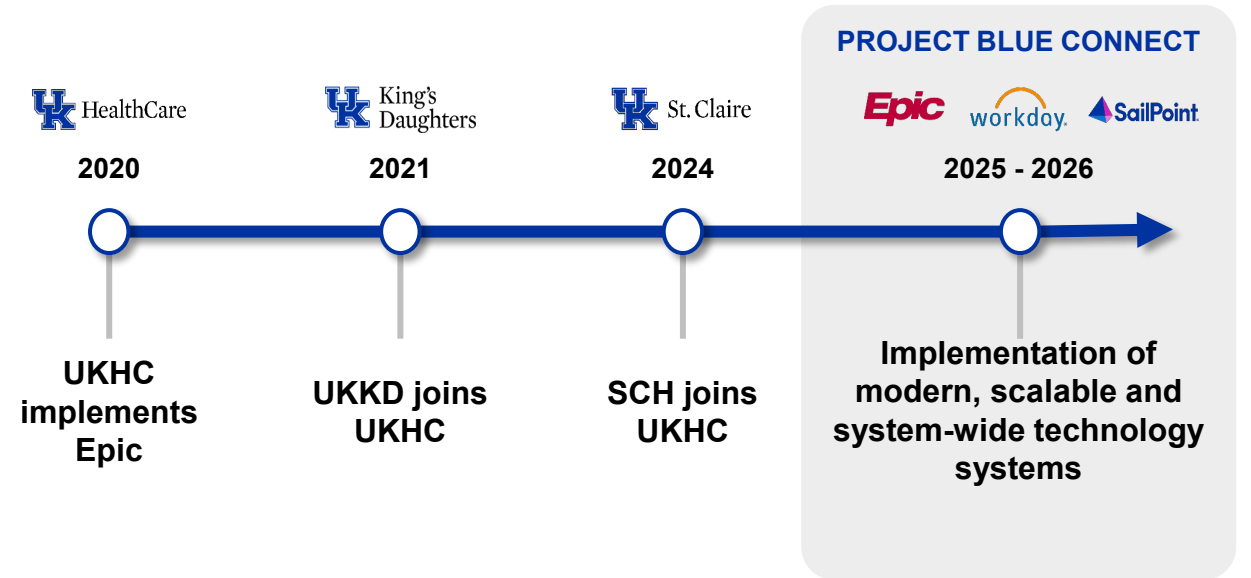
Project Blue-Connect

The addition of UK King's Daughters and UK St. Claire has created the opportunity to transform our organizational infrastructure through Project Blue-Connect.

## UKHC and Beyond Blue Affiliates



## Timeline Overview








**Project Blue-Connect will provide the technology infrastructure to improve clinical quality, enable greater integration and reporting and enhance the employee and patient experience.**

# EVPFA REPORT

Future State Platforms and Systems

These critical IT systems will benefit UK, UKHC and Beyond Blue entities by enhancing clinical quality tracking, capturing cost and operational efficiencies, standardizing processes and improving security across the enterprise.

Entity		Platforms			
		EHR	ERP	IAM	Cloud
UK/UKHC					
Beyond Blue	UKKD				
	SCH				

Workday and SAP team will coordinate to minimize duplicative efforts and maximize efficiency across limited resources.

# EVPFA REPORT

Unlocking Value through Consolidation and Modernization

Implementing consolidated Epic, IAM and ERP platforms for the UK and Beyond Blue entities will position the broader UK organization for future growth and promote long-term technology stability and scalability.

## Project Blue-Connect Benefit Opportunities



*Clinical Quality*



*Operational Synergies*



*Improved Security*



*Cost Efficiency*

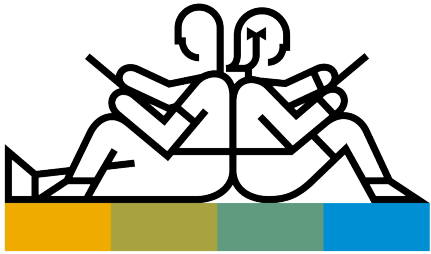


*Standardized User Experience*

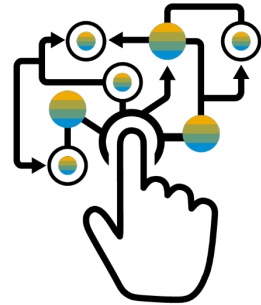
# EVPFA REPORT

How SAP S/4HANA Will transform The Way UK operates

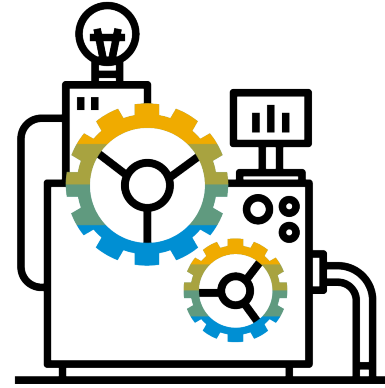
The SAP modernization will deliver several enhancements while also allowing UK to keep pace with future innovation.



User Experience and  
Embedded Analytics



Processes and  
Business Intelligence



Embedded  
Artificial Intelligence



Cloud Solutions



# Gifts to Advance Kentucky

- Gifts and grants to support student learning experiences, strengthen faculty and drive research



**FCR 1**



# QUESTIONS

