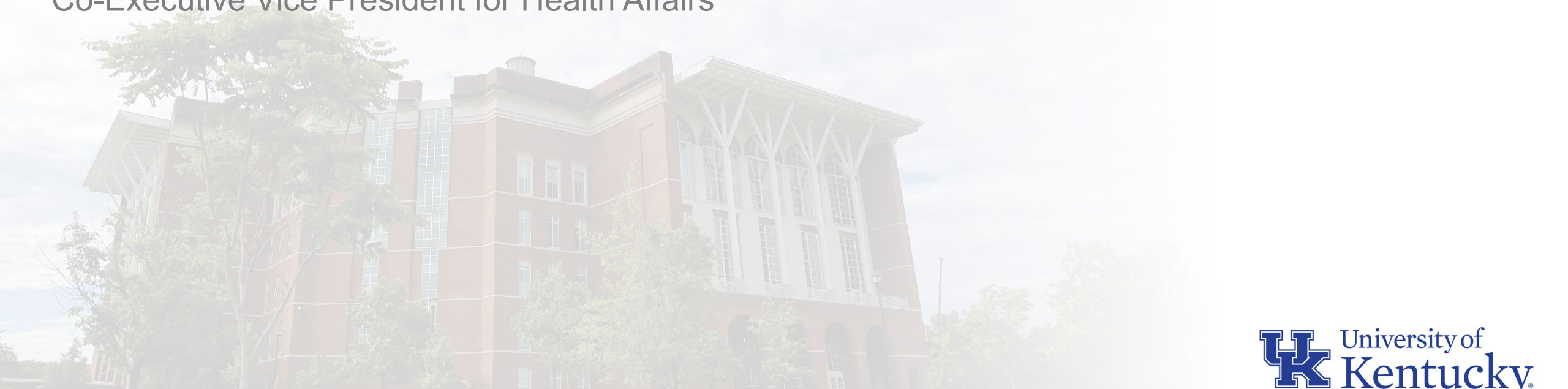


UNIVERSITY OF KENTUCKY BOARD OF TRUSTEES

Eric N. Monday, Executive Vice President for Finance Administration and
Co-Executive Vice President for Health Affairs



AN EQUAL OPPORTUNITY UNIVERSITY

WHAT WE WILL COVER

- Summary of FCRs
- Update: Smart Campus
- Update: CR 1 Work Group 3 - More Partnerships



FCRs Overview: Gifts to further our mission to heal, discover

- Gifts in support of research in pediatric behavioral health will be matched with state funds from the Endowment Match Program



FCRs Overview: Investments to support students, our people

- Continued partnership with Apple for Smart Campus initiative
- Parking and transportation improvements



FCRs Overview: Investments to foster discovery

- Construction of new research facility in the Martin-Gatton College of Agriculture, Food and Environment



UNIVERSITY OF KENTUCKY BOARD OF TRUSTEES

Heath Price, Associate Vice President for Partnerships



AN EQUAL OPPORTUNITY UNIVERSITY

UK and Apple Partnership

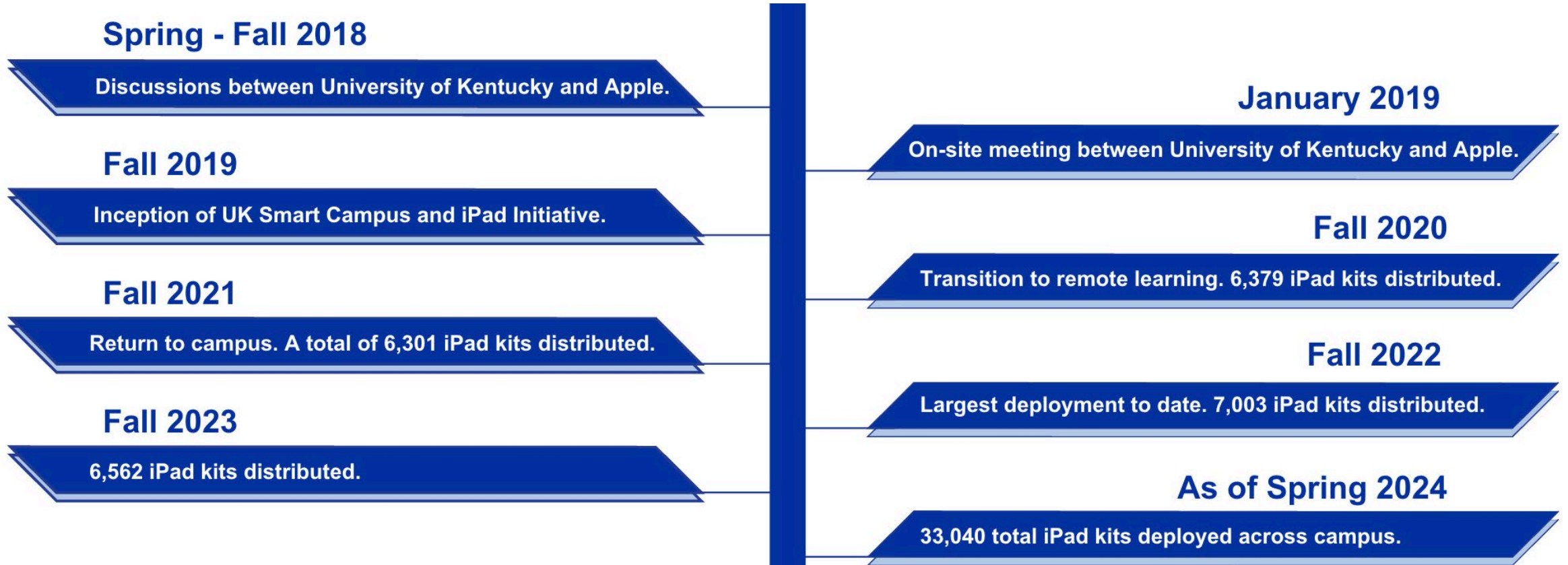
Smart Campus iPad Initiative

Items in the iPad kit that a UK student currently receives:

- iPad Air (5th generation)
- Keyboard
- Magic Pencil



Partnership Timeline



Deployment Stats

Total Student Kits	Total Faculty Kits	Total Kits Deployed
32,075	965	33,040



PLACEHOLDER FOR VIDEO = UK+APPLE PARTNERSHIP

Higher Education

Overview App Development Success Stories [How to Buy](#)



University of Kentucky

**Giving today's students
a next gen education.**

QUESTIONS



UNIVERSITY OF KENTUCKY BOARD OF TRUSTEES

Nancy Cox, Vice President for Land-Grant Engagement and Dean of the Martin-Gatton College of Agriculture, Food and Environment

Rob Edwards, Vice President and Chief Strategy and Growth Officer, UK HealthCare



AN EQUAL OPPORTUNITY UNIVERSITY

PROJECT ACCELERATE

ACCELERATE GROWTH TO DO MORE AND BE MORE FOR KENTUCKY

Work Group 3: More Partnerships

Agenda

- Work Group Overview
- Kentucky Community and Technical College System (KCTCS) Partnership Update
- Academic Medical Center (AMC) Benchmarking Update
- Addressing Local Challenges

**OUR CHARGE
(CR 1)**

Expanding the University's impact through **partnerships, acquisitions, new initiatives** with **schools, governments, non-profits, industry and corporations** that **enhance UK's ability to meet the state's needs** through its mission of education, research, service and care.

WORK GROUP DELIVERABLES AND MILESTONES

Focus on developing deeper relationships with partners to drive impact.

DELIVERABLES

1. UK HealthCare Partnership Strategy

Outline status of current UK HealthCare acquisitions and partnerships, and enumerate strategic imperatives for future acquisitions and partnerships

2. Increase Health Care Workforce Pipeline

Assess potential for partnerships with local universities/community colleges to create larger pipeline and expansion of student population in key areas to help meet health care workforce needs

3. Addressing Local Challenges

Work with public/private sector partners to assess how the University can collaborate in addressing local challenges to growth (e.g., employment, housing, childcare)

4. Urban to Rural Partnerships

Identify potential urban, suburban and rural partnership opportunities that will leverage relationships with public and private sectors to advance Kentucky's workforce needs

KEY MILESTONES



Benchmark academic institutions partnerships



Determine if Academic Medical Center (AMC) partnership benchmarks exist



Make preliminary partnership recommendations

KCTCS PARTNERSHIP UPDATE

Eric N. Monday, Executive Vice President for Finance and
Administration; Co-Executive Vice President for Health Affairs



KENTUCKY COMMUNITY AND TECHNICAL COLLEGE SYSTEM (KCTCS) MEETING AGENDA

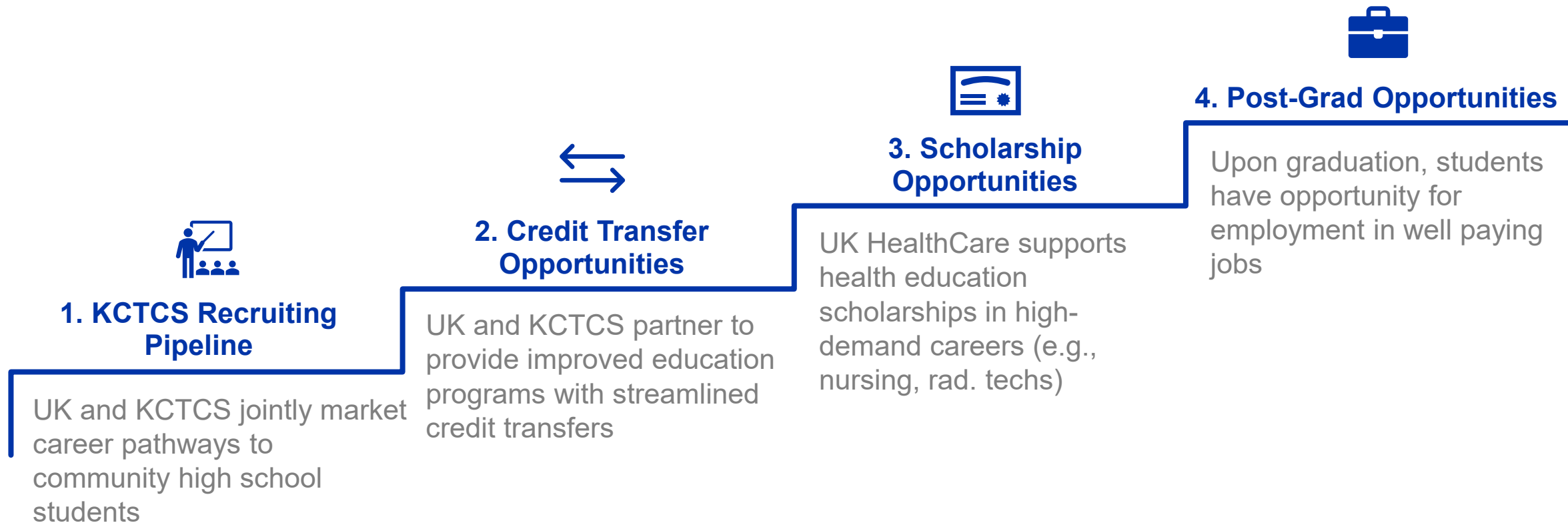
On March 6, 2024, met with KCTCS and discussed the following:

Opportunities to Modernize and Deepen Collaborations

- **Curriculum**
 - KCTCS-to-University of Kentucky General Education Transfer Opportunities
 - Allied health program 2+2 opportunities
 - Agriculture/Engineering 2+2 opportunities
- **Workforce**
 - Support KCTCS statewide workforce development planning efforts
 - Workforce training/re-training in regions with UK HealthCare and KCTCS presence
 - Collaborate on Automotive/Battery Technology
- **Partnerships**
 - Renew and modernize partnership with a fresh agreement
 - Support KCTCS allied health programs
 - Support KCTCS with networking for adjunct faculty
 - Joint grant/grant management opportunities
 - Leverage opportunities to collaborate with county extension programs
 - Recruitment pipeline programs
 - Market programs jointly (show high school students' pathways for growth)
- Communicating our renewed partnership

PARTNERSHIP SUPPORTED CAREER LADDER

Example of Partnership Supported Career Ladder



ACADEMIC MEDICAL CENTER (AMC) BENCHMARKING

Eric N. Monday, Executive Vice President for Finance and
Administration; Co-Executive Vice President for Health Affairs



AMC PARTNERSHIP RESEARCH – PROCESS OVERVIEW

Benchmarking Group

Initial Benchmarking Group



2016



2018



2022



2021

Future Benchmarking (Baseline Captured)



TBA



2022



2023



2024



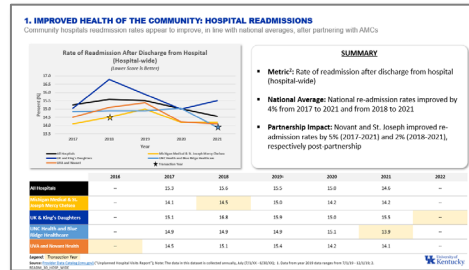
2023



2024

Qualitative Benchmarking

Publicly available data for key health and economic metrics



“Improved Health of the Community: Hospital Readmission Rate”

Example Data Sources:



Qualitative Insights

Interviews, Community Benefit Report, National Research Corporation Reports, and Press Releases to supplement key metrics

External Interview Questions

Comprehensive Report

Overview of the insights found relating to the mutual benefits of AMC partnerships



Improved Health of the Community



Enhanced Access to Specialty Care



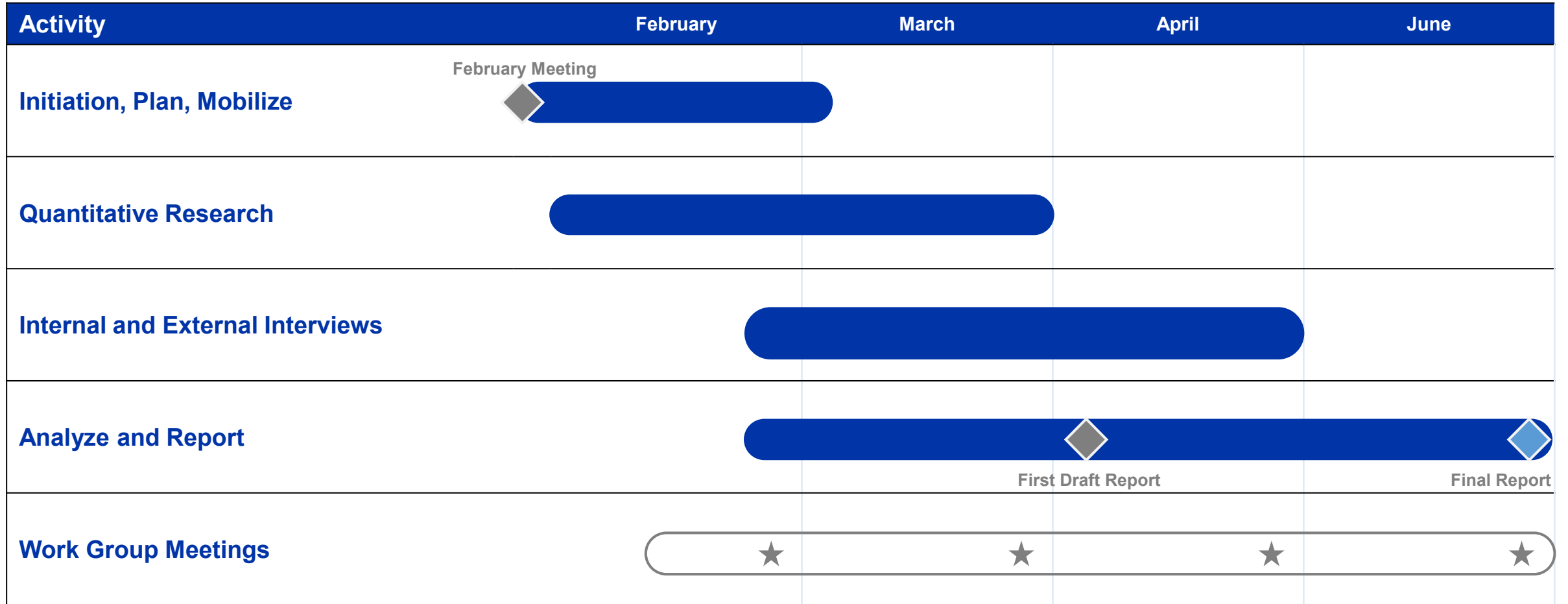
Enhanced Local Workforce



Improved Clinical Expertise and Knowledge Transfer

MORE PARTNERSHIPS PROJECT PLAN

The work group is currently finalizing research on quantitative benchmarks and interviews; final report to be shared in June



KEY:  Activities  Project Milestone  Project Meeting

ADDRESSING LOCAL CHALLENGES

Eric N. Monday, Executive Vice President for Finance and Administration; Co-Executive Vice President for Health Affairs




ADDRESSING LOCAL CHALLENGES

Addressing Local Challenges to Growth

Deliverable: Work with public/private sector partners to assess how the University can collaborate in addressing local challenges to growth (e.g., employment, housing, childcare).

Community Engagement:

Look to engage key community organizations (ie. Commerce Lexington) to generate thoughts on how to best support and approach local challenges to housing, childcare, transportation, food insecurity, etc. Engage appropriate UK faculty in these discussions.

 University of Kentucky. Accelerate Growth to Do More and Be More for Kentucky

Work Group III: More Partnerships

Narrative Charge (per [Chairman's Recommendation I](#))

Expanding the University's impact through partnerships, acquisitions, new initiatives with schools, governments, non-profits, industry and corporations that enhance UK's ability to meet the state's needs through its mission of education, research, service and care.

Assigned Area: Office of the EVPFA

Membership

1. Rob Edwards (*UK HealthCare*) **co-facilitator**
2. Nancy Cox (*Martin-Gatton College of Agriculture, Food and Environment*) **co-facilitator**
3. Heath Price (*Partnerships*)
4. Jake Lemon (*Philanthropy*)
5. Mitch Barnhart (*Athletics*)
6. George Ward (*Economic Development*)
7. Taunya Phillips (*Office of Technology Commercialization*)
8. Laura Stephenson (*Martin-Gatton College of Agriculture, Food and Environment*)
9. 1 student (*Student Government Association*)
10. 1 staff (*Staff Senate*)
11. 1 faculty (*University Senate*)
12. Recorder: Jay Blanton (*PR and Strategic Communications*)

Expectations

1. Provide report at every Board meeting and approximately once per month at President's Cabinet meetings
2. Meet at least once before December 5 Board meeting

Deliverables

1. Outline status of current UK HealthCare acquisition and partnerships and enumerate strategic imperatives for future such acquisitions and partnerships
2. Assess potential for partnerships with Kentucky universities/community colleges to create larger pipeline that will allow for expansion of student population in key areas to help meet health care workforce needs (nursing, physical therapists, physicians, etc.)
3. Work with public/private sector partners to assess how university can collaborate in addressing local challenges to growth (e.g., employment, housing, childcare)
4. Identify potential partnership opportunities in Louisville that will leverage relationships with public and private sectors to advance Kentucky's workforce needs

Key Milestones – First Three

1. Conduct analysis of benchmark institutions accomplishments in academic space with respect to innovative partnerships and/or acquisitions
2. Determine whether there are benchmarks for analysis among universities with large academic health systems in addressing partnership potential and workforce needs
3. Make preliminary recommendations for potential collaborations in Lexington, Louisville to address community-wide issues and strengthen local and regional presence in those areas

QUESTIONS

