

UNIVERSITY OF KENTUCKY BOARD OF TRUSTEES

Robert DiPaola, Provost and Co-Executive Vice President for Health Affairs



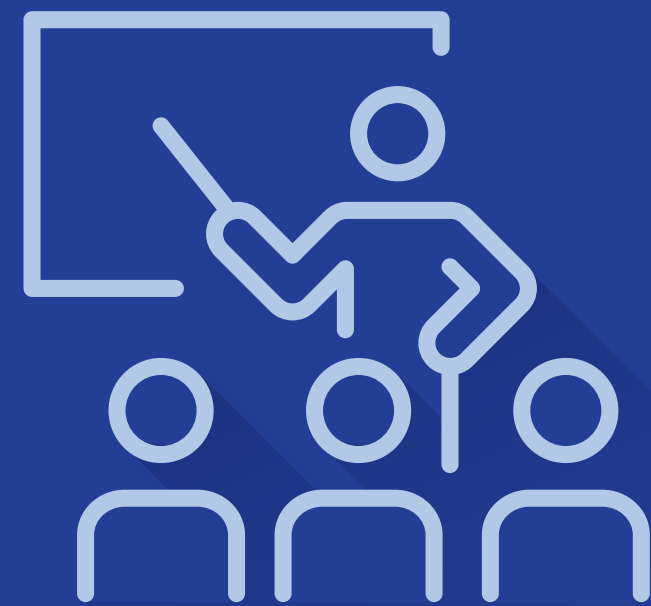
LEVERAGING RESOURCES TO ADVANCE KENTUCKY

HOW DO YOU MEASURE DISTRIBUTION OF EFFORT (DOE)?

SERVICE



INSTRUCTION



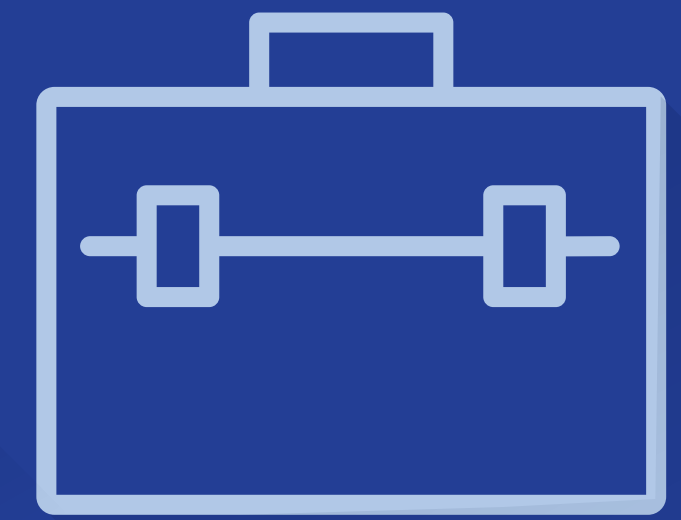
RESEARCH



ADMINISTRATION



PROFESSIONAL
DEVELOPMENT



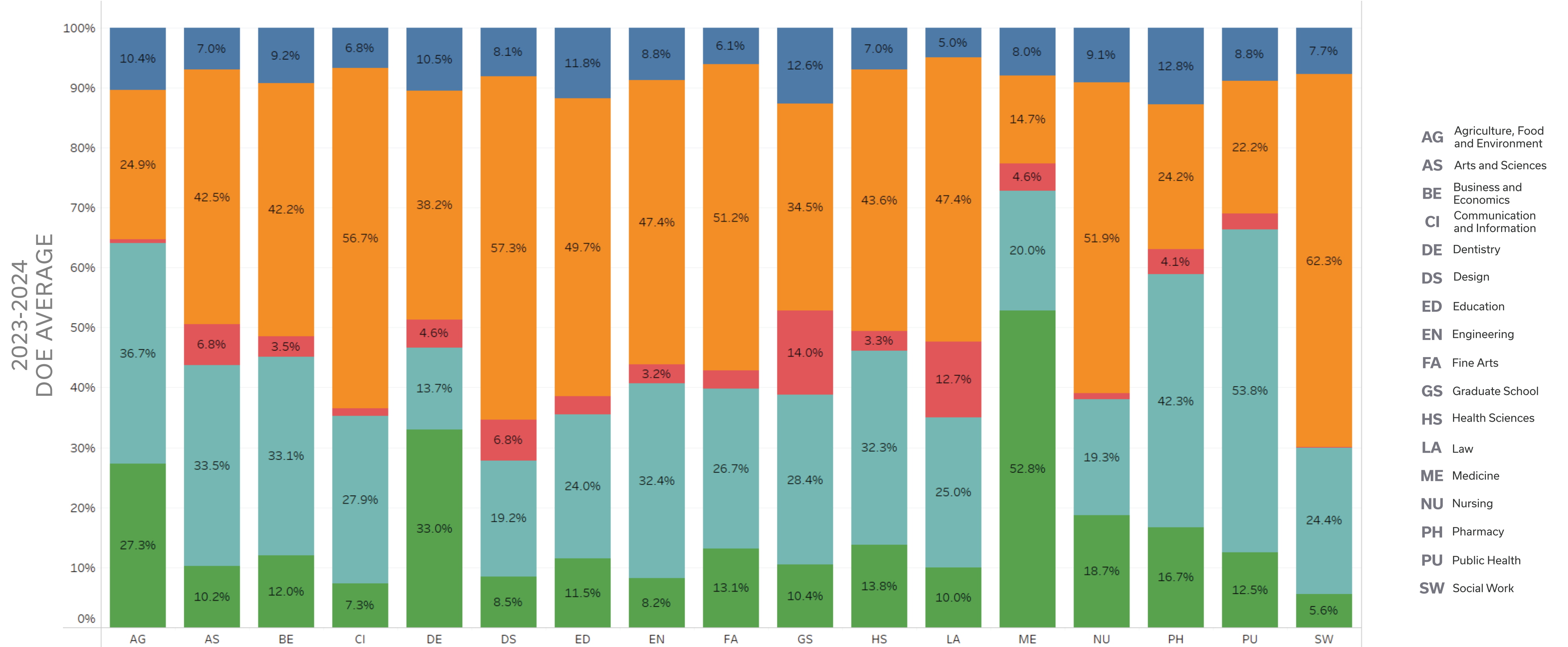
DOE AVERAGES

(Full-Time Faculty, No VA Positions, Does Not Include Administrators)

DOE



COLLEGE

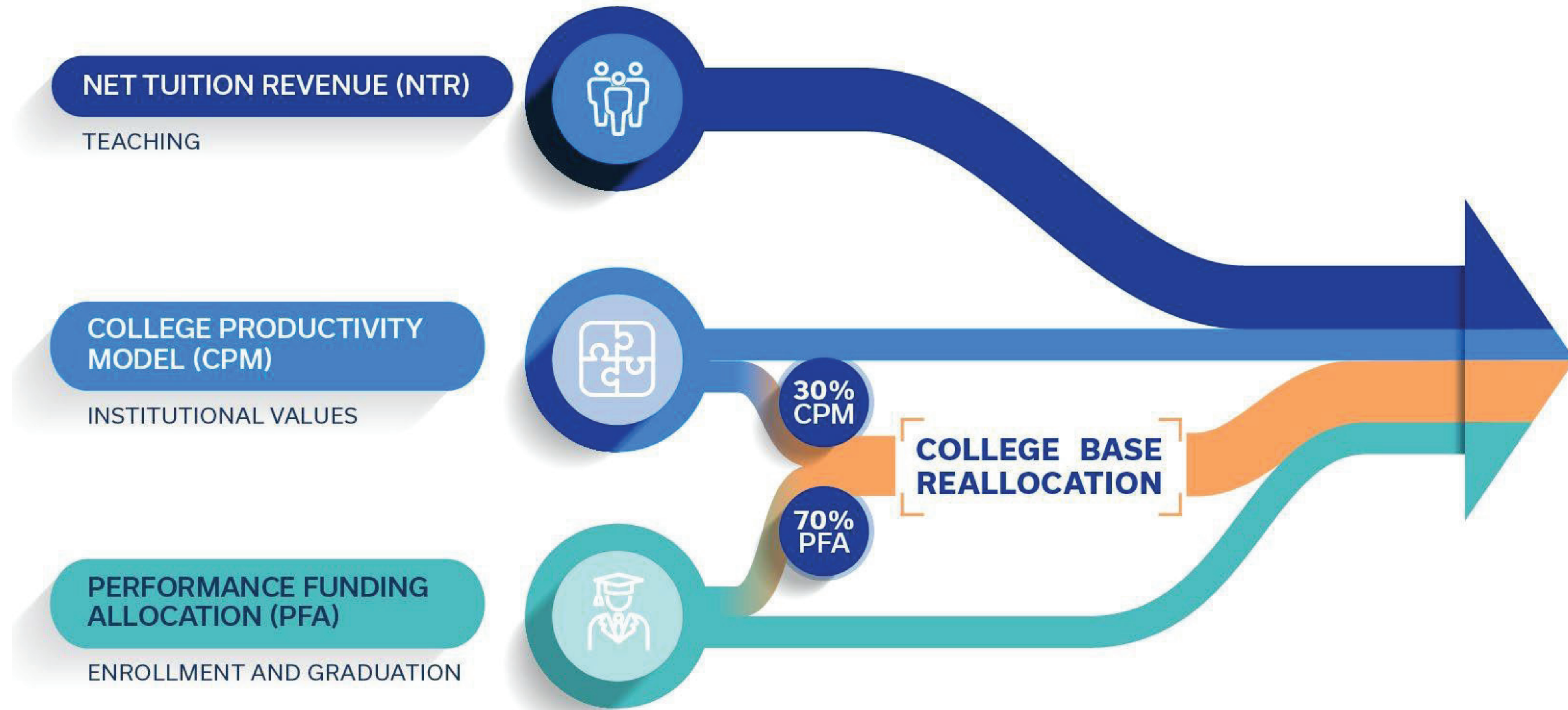


	AG	AS	BE	CI	DE	DS	ED	EN	FA	GS	HS	LA	ME	NU	PH	PU	SW	TOTAL
Administration	10.4%	7.0%	9.2%	6.8%	10.5%	8.1%	11.8%	8.8%	6.1%	12.6%	7.0%	5.0%	8.0%	9.1%	12.8%	8.8%	7.7%	8.3%
Instruction	24.9%	42.5%	42.2%	56.7%	38.2%	57.3%	49.7%	47.4%	51.2%	34.5%	43.6%	47.4%	14.7%	51.9%	24.2%	22.2%	62.3%	31.2%
Professional Development	0.6%	6.8%	3.5%	1.2%	4.6%	6.8%	3.0%	3.2%	3.0%	14.0%	3.3%	12.7%	4.6%	1.1%	4.1%	2.7%	0.0%	4.2%
Research	36.7%	33.5%	33.1%	27.9%	13.7%	19.2%	24.0%	32.4%	26.7%	28.4%	32.3%	25.0%	20.0%	19.3%	42.3%	53.8%	24.4%	26.7%
Service	27.3%	10.2%	12.0%	7.3%	33.0%	8.5%	11.5%	8.2%	13.1%	10.4%	13.8%	10.0%	52.8%	18.7%	16.7%	12.5%	5.6%	29.5%

DISTRIBUTION OF EFFORT:
INSTRUCTION



FUELING OUR SUCCESS: FINANCIAL ALLOCATION MODELS



LEVERAGING RESOURCES TO ADVANCE KENTUCKY

FUELING OUR SUCCESS: COLLEGE FINANCIAL ALLOCATION MODELS ACTUAL DISTRIBUTIONS

	FY 2020-21	FY 2021-22	FY 2022-23	FY 2023-24	FY 2024-25*	Grand Total
NTR	\$12.2	\$24.0	\$11.8	\$4.6	\$4.2	\$56.8
CPM		\$3.0	\$4.5	\$6.0	\$7.5	\$21.0
PFA			\$3.0	\$3.0	\$3.0	\$9.0
College Reallocation (CPM 30%/PFA 70%)			\$7.5	\$9.0	\$10.5	\$27.0
Total	\$12.2	\$27.0	\$26.8	\$22.6	\$25.2	\$113.8

IN MILLIONS

*As of September 2024

LEVERAGING RESOURCES TO ADVANCE KENTUCKY

FUELING OUR SUCCESS: FINANCIAL ALLOCATION MODELS OVERVIEW

NET TUITION REVENUE (NTR):

Incentivize enrollment growth by sharing increase in net tuition revenue.

COLLEGE PRODUCTIVITY MODEL (CPM):

Incentivize institutional values; Colleges awarded funds if performance is above the mean for metrics:

- Degrees awarded per faculty
- Percent of research/external compensation
- Percent of attempted student credit hours taught by tenured and/or full-time faculty
- Percent of diverse tenured and/or diverse full-time faculty
- UK Work Life Survey results

As previously scheduled and announced, CPM is being reviewed during FY 2024-25.

We anticipate modifications to the funding model, which may be implemented during this fiscal year.

PERFORMANCE FUNDING ALLOCATION (PFA):

Incentivize enrolling and graduating more students and in-person instruction;

Colleges awarded funds based on proportionate share of:

- Degree production
- Enrollment of new students
- Increase percent of courses with traditional modality

LEVERAGING RESOURCES TO ADVANCE KENTUCKY

INCENTIVE FUNDS FOR COLLEGES – CPM

College Productivity Model (CPM)

College Productivity Model – Seven Performance Metrics

- Provide meaningful incentives to improve the success of our students, the productivity of our research and the impact of our service
- Recognize the unique characteristics of individual colleges by measuring and rewarding individual college improvement over time
- Fixed amount allocated

As previously scheduled and announced, CPM is being reviewed during FY 2024-25. We anticipate modifications to the funding model, which may be implemented during this fiscal year.

CPM METRICS

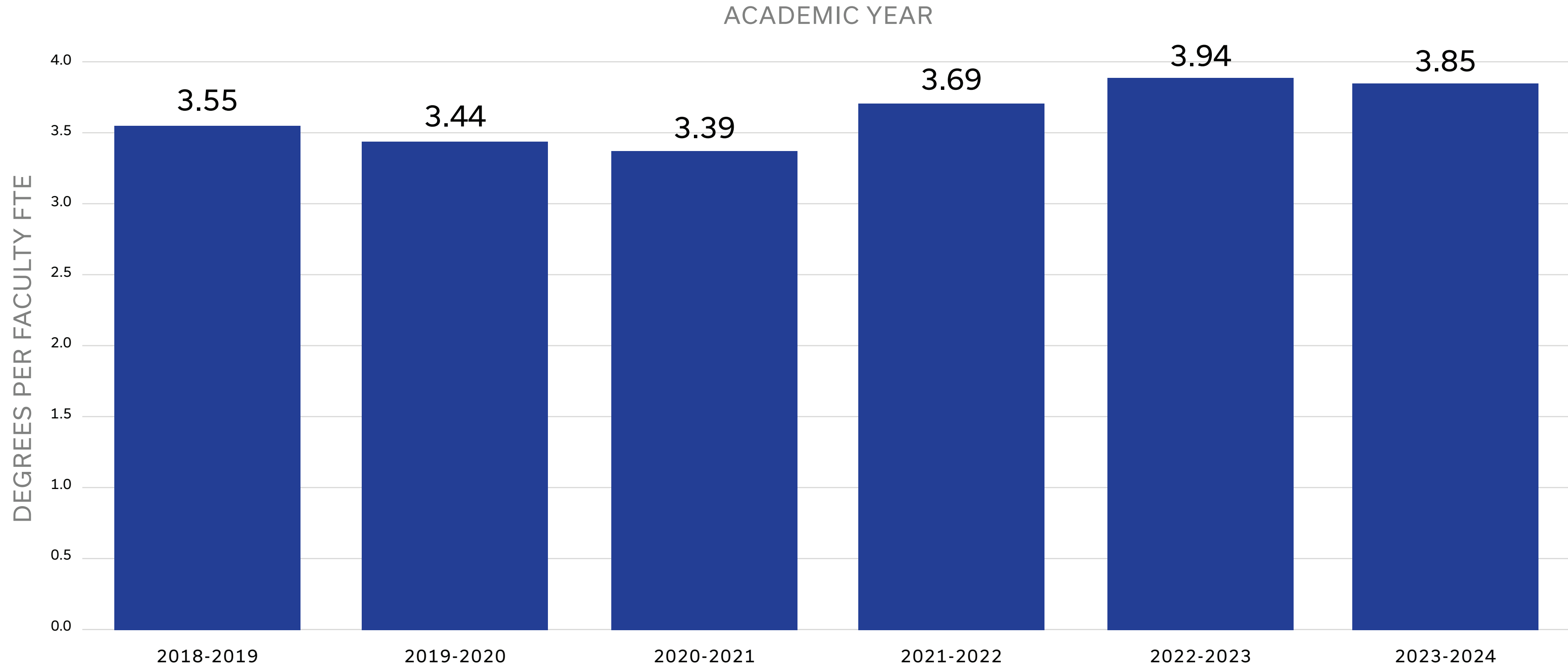
scored based on both overall standing and year-over-year improvement

1. Degrees per faculty
2. External research funding
3. Credit hours taught by tenured faculty
4. Credit hours taught by full-time faculty
5. Diversity among tenured faculty
6. Diversity among full-time faculty
7. UK Work Life Survey (three categories)

COLLEGE PERFORMANCE FUNDING METRIC 1

DEGREES PER FACULTY FTE * Full Time Equivalent

(No Certificates; Full-Time Faculty, No VA Positions, Does Not Include Administrators; Includes only 10%+ DOE Instruction)



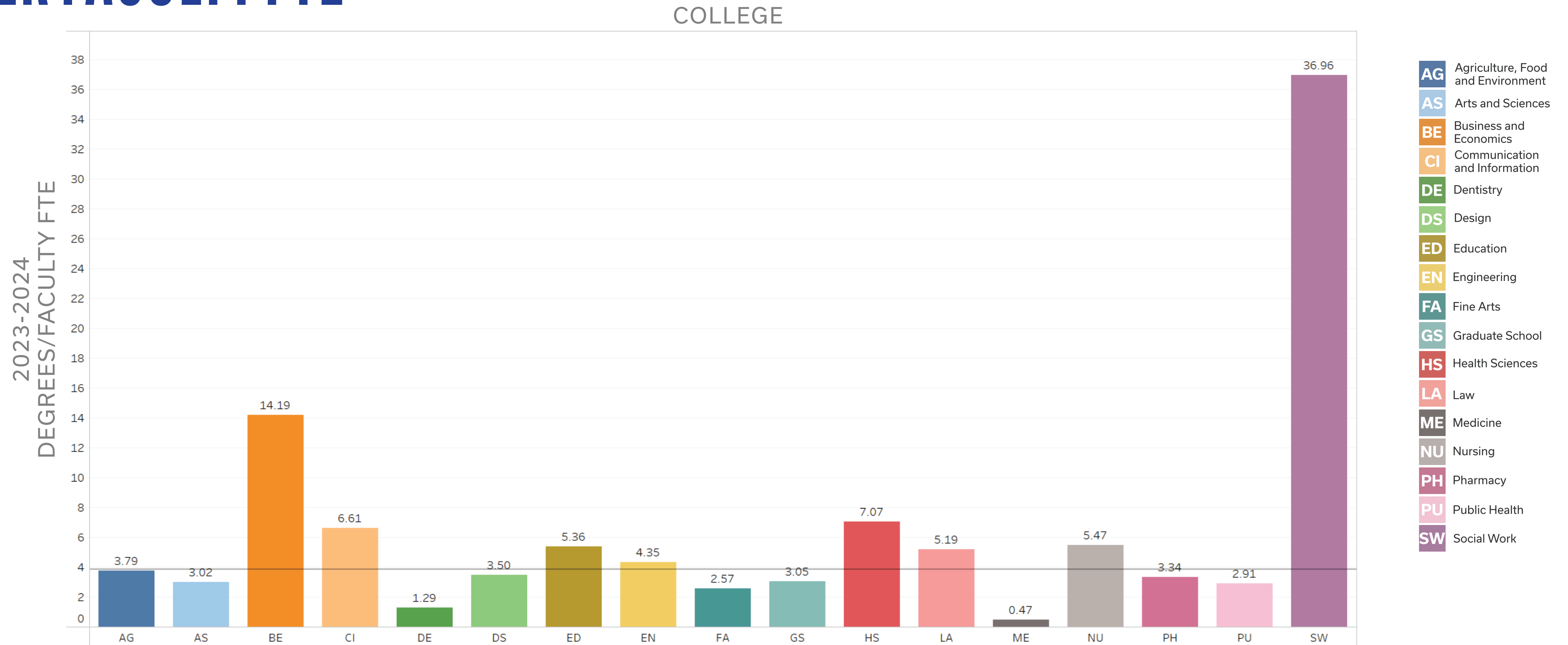
	2018-2019	2019-2020	2020-2021	2021-2022	2022-2023	2023-2024
Degrees	7,317	7,446	7,193	7,571	8,199	8,097
Faculty FTE	2,063	2,164	2,124	2,052	2,082	2,105
Degrees/ Faculty FTE	3.55	3.44	3.39	3.69	3.94	3.85

Note: CPM allocation utilizes a 3-year moving average of the Degrees/Faculty FTE ratio

COLLEGE PERFORMANCE FUNDING METRIC 1

DEGREES PER FACULTY FTE

(No Certificates; Full-Time Faculty, No VA Positions, Does Not Include Administrators; Includes only 10%+ DOE Instruction)



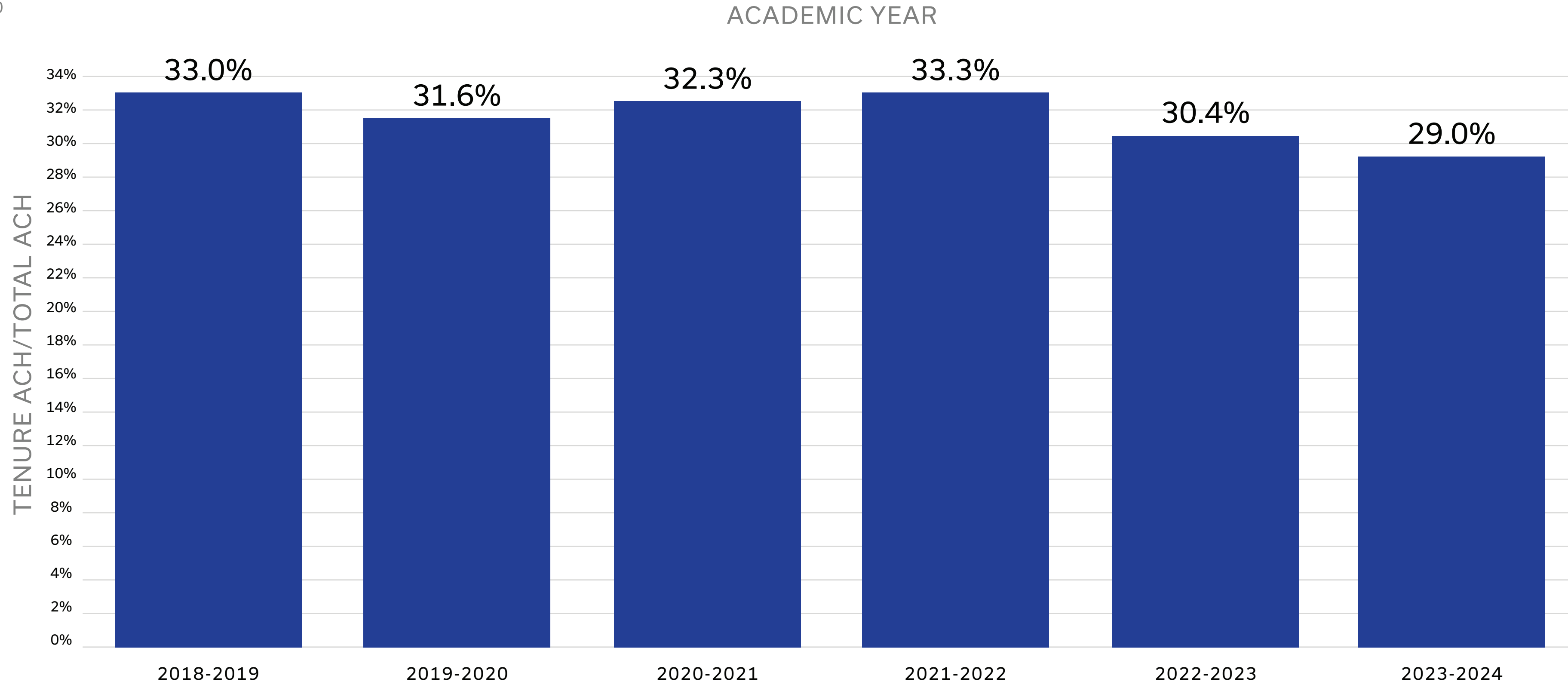
	AG	AS	BE	CI	DE	DS	ED	EN	FA	GS	HS	LA	ME	NU	PH	PU	SW	TOTAL
Degrees	583	1,280	1,348	608	72	154	547	683	249	67	396	140	277	383	147	128	1,035	8,097
Faculty FTE	154	424	95	92	56	44	102	157	97	22	56	27	593	70	44	44	28	2,105
Degrees/ Faculty FTE	3.79	3.02	14.19	6.61	1.29	3.50	5.36	4.35	2.57	3.05	7.07	5.19	0.47	5.47	3.34	2.91	36.96	3.85

Note: CPM allocation utilizes a 3-year moving average of the Degrees/Faculty FTE ratio

COLLEGE PERFORMANCE FUNDING METRIC 3

TENURE ACH/TOTAL ACH * Attempted Credit Hours

(Full-Time Faculty, No VA Positions,
Does Not Include Administrators)



	2018-2019	2019-2020	2020-2021	2021-2022	2022-2023	2023-2024
Tenure ACH	257,863	252,261	261,563	265,393	253,358	252,536
Total ACH	782,386	797,716	808,967	795,967	832,790	871,415
Tenure ACH / Total ACH	33.0%	31.6%	32.3%	33.3%	30.4%	29.0%

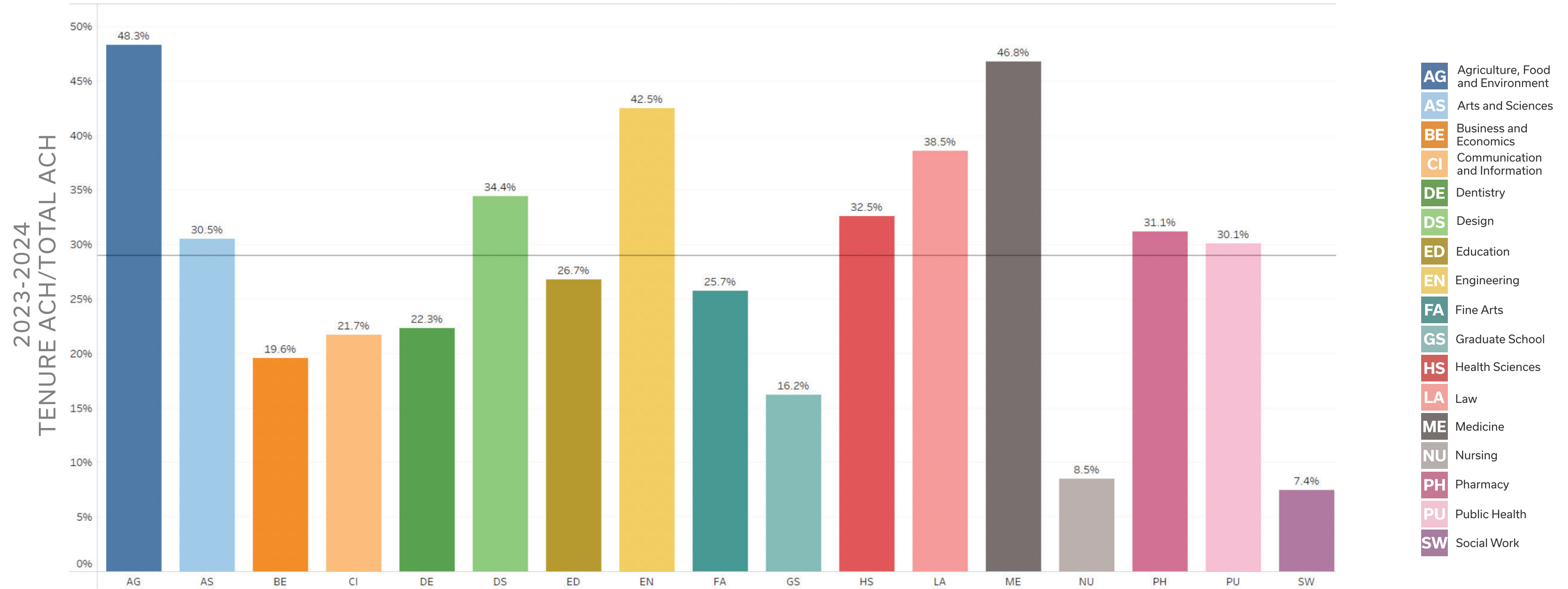
CPM allocation utilizes a 3-year moving average of the Tenure ACH/Total ACH ratio.

COLLEGE PERFORMANCE FUNDING METRIC 3

TENURE ACH/TOTAL ACH

(Full-Time Faculty, No VA Positions, Does Not Include Administrators)

COLLEGE



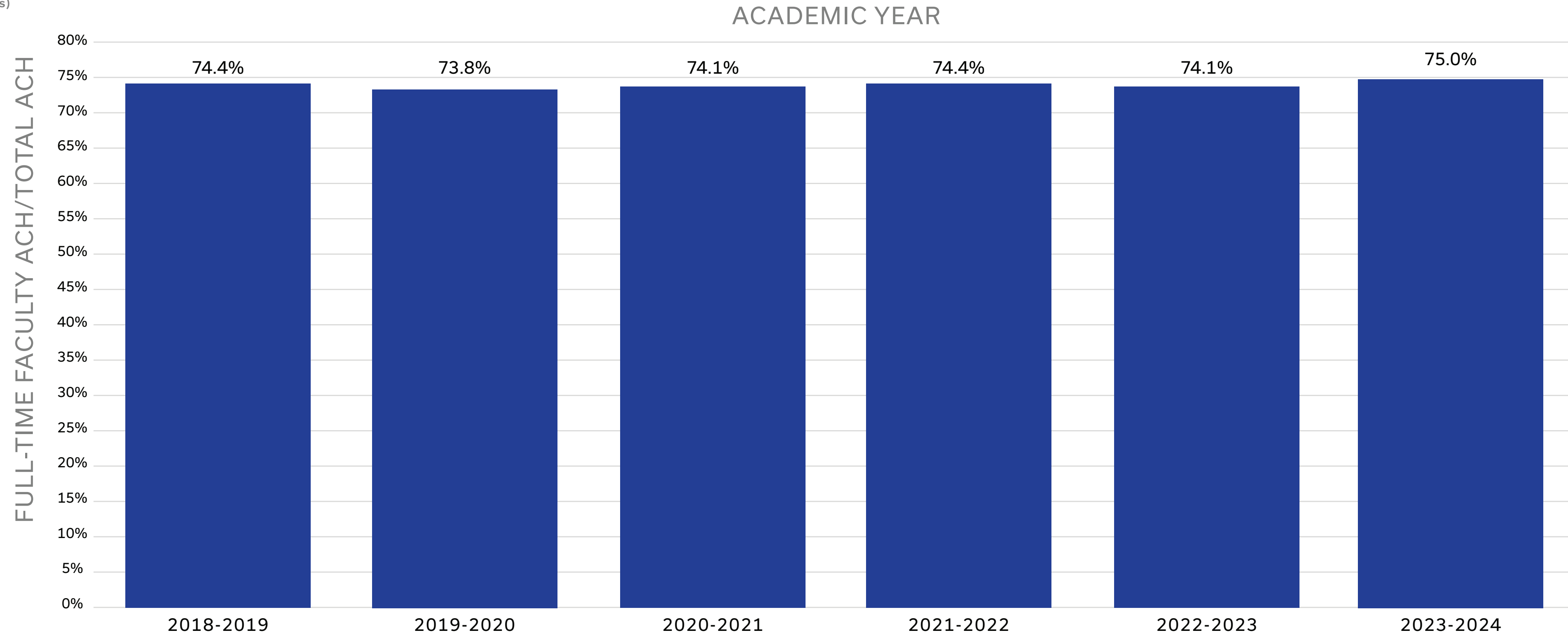
	AG	AS	BE	CI	DE	DS	ED	EN	FA	GS	HS	LA	ME	NU	PH	PU	SW	TOTAL
Tenure ACH	24,082	92,315	19,377	12,897	2,152	4,471	11,300	21,447	8,691	550	9,823	4,804	24,527	2,218	5,845	3,948	4,089	252,536
Total ACH	49,906	302,558	98,985	59,361	9,657	12,984	42,254	50,459	33,754	3,392	30,181	12,464	52,450	26,076	18,766	13,134	55,034	871,415
Tenure ACH/ Total ACH	48.3%	30.5%	19.6%	21.7%	22.3%	34.4%	26.7%	42.5%	25.7%	16.2%	32.5%	38.5%	46.8%	8.5%	31.1%	30.1%	7.4%	29.0%

Note: CPM allocation utilizes a 3-year moving average of the Tenure ACH/Total ACH ratio

COLLEGE PERFORMANCE FUNDING METRIC 4

FT FACULTY ACH/TOTAL ACH

(Full-Time Faculty, No VA Positions,
Does Not Include Administrators)



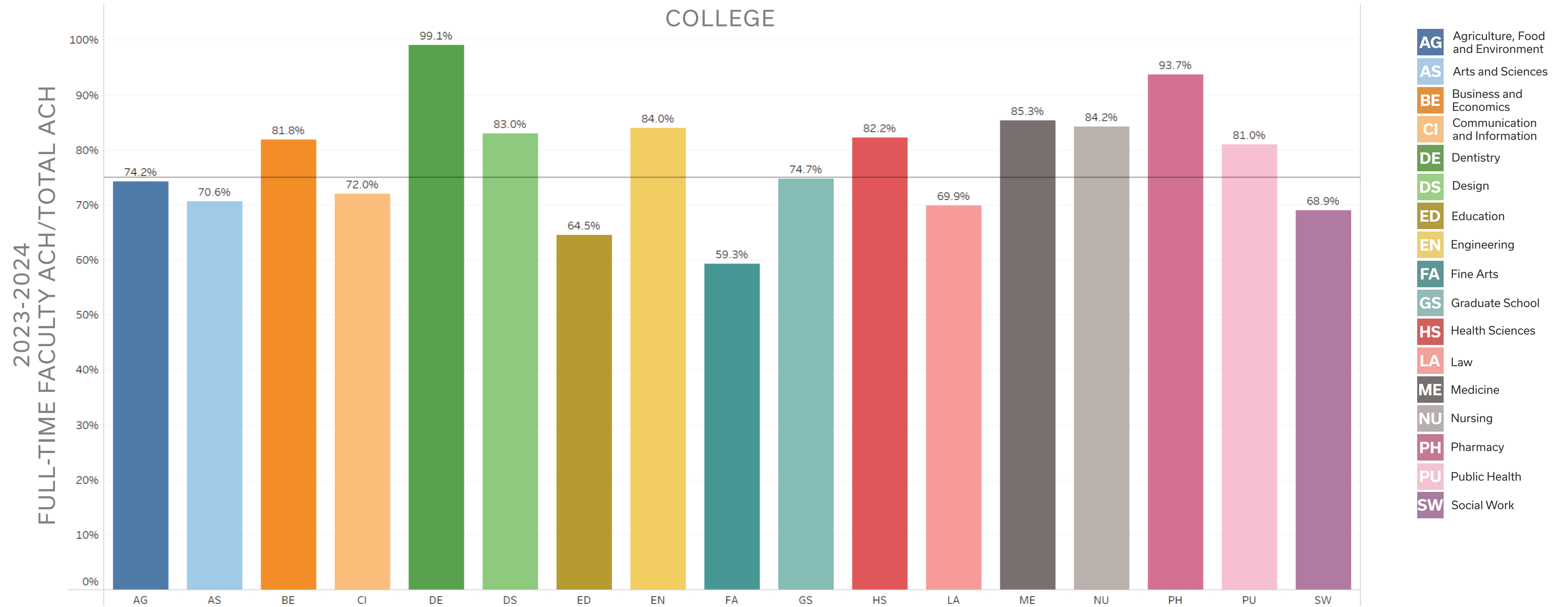
	2018-2019	2019-2020	2020-2021	2021-2022	2022-2023	2023-2024
FT Faculty ACH	582,285	588,628	599,695	592,338	617,505	653,232
Total ACH	782,386	797,716	808,967	795,967	832,790	871,415
FT Faculty ACH / Total ACH	74.4%	73.8%	74.1%	74.4%	74.1%	75.0%

Note: CPM allocation utilizes a 3-year moving average of the FT Faculty ACH/Total ACH ratio

COLLEGE PERFORMANCE FUNDING METRIC 4

FT FACULTY ACH/TOTAL ACH

(Full-Time Faculty, No VA Positions, Does Not Include Administrators)

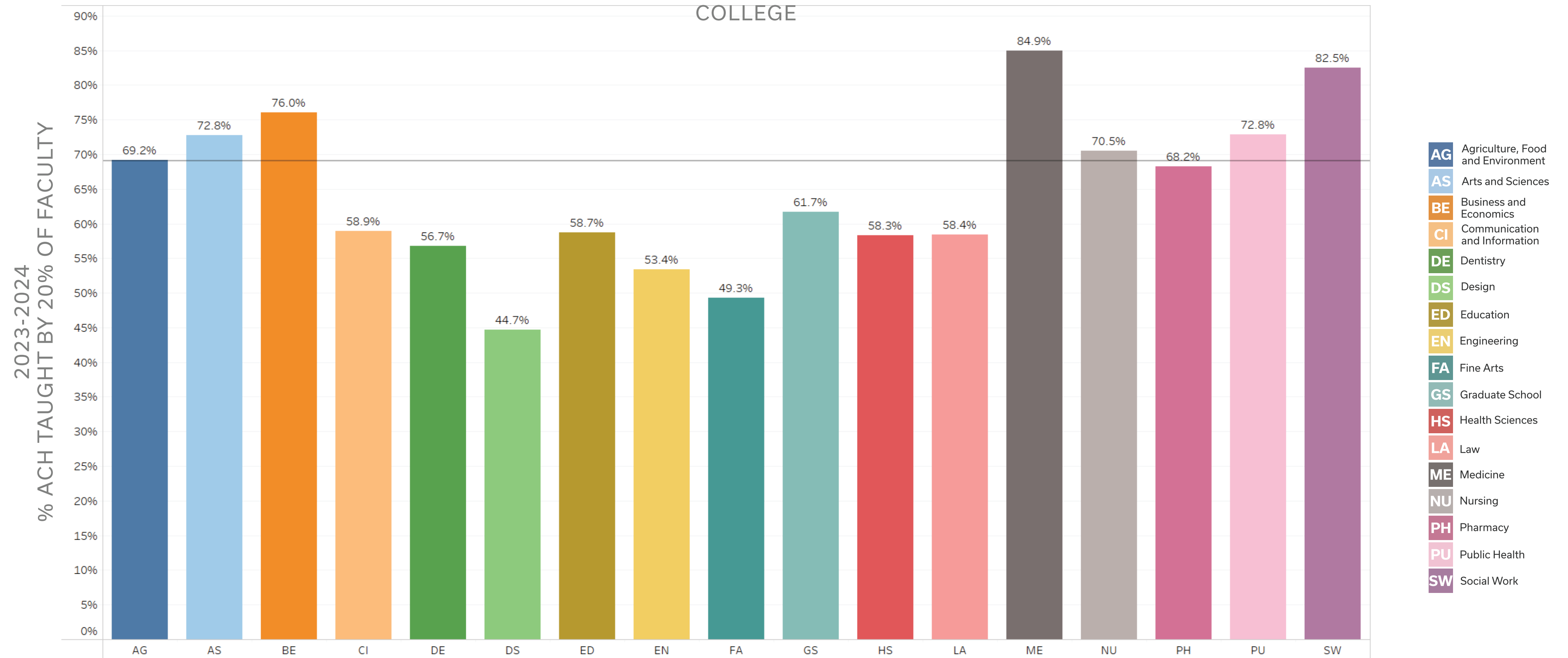


	AG	AS	BE	CI	DE	DS	ED	EN	FA	GS	HS	LA	ME	NU	PH	PU	SW	TOTAL
FT Faculty ACH	37,017	213,580	80,983	42,752	9,569	10,773	27,249	42,382	20,007	2,534	24,810	8,709	44,756	21,946	17,581	10,640	37,944	653,323
Total ACH	49,906	302,558	98,985	59,361	9,657	12,984	42,254	50,459	33,754	3,392	30,181	12,464	52,450	26,076	18,766	13,134	55,034	871,415
FT Faculty ACH / Total ACH	74.2%	70.6%	81.8%	72.0%	99.1%	83.0%	64.5%	84.0%	59.3%	74.7%	82.2%	69.9%	85.3%	84.2%	93.7%	81.0%	68.9%	75.0%

Note: CPM allocation utilizes a 3-year moving average of the FT Faculty ACH/Total ACH ratio

PERCENTAGE OF ACH TAUGHT BY TOP 20% OF FACULTY (BASED ON ACH PRODUCTION)

(Includes any Primary instructor who is faculty; no Full-Time/VA/Administrator restrictions)



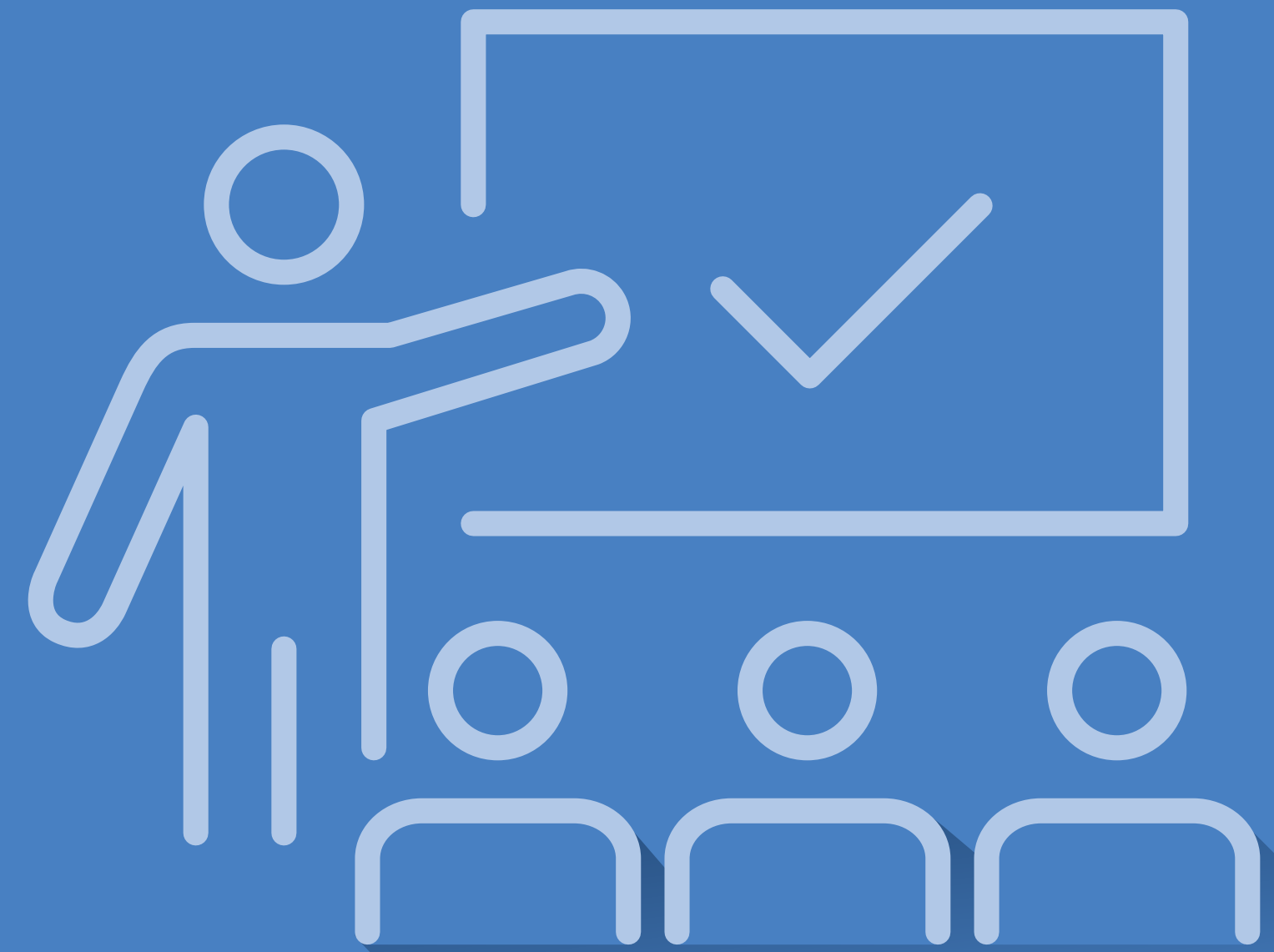
	AG	AS	BE	CI	DE	DS	ED	EN	FA	GS	HS	LA	ME	NU	PH	PU	SW	TOTAL
ACH Taught by Top 20% Faculty	28,076	162,629	67,554	28,345	5,454	5,712	18,610	24,918	13,617	1,788	15,182	6,388	42,822	17,417	12,389	8,604	41,215	500,720
Total Faculty ACH	40,596	223,522	88,841	48,140	9,615	12,773	31,703	46,629	27,634	2,898	26,019	10,933	50,431	24,700	18,162	11,812	49,945	724,353
ACH % Taught by Top 20% Faculty	69.2%	72.8%	76.0%	58.9%	56.7%	44.7%	58.7%	53.4%	49.3%	61.7%	58.3%	58.4%	84.9%	70.5%	68.2%	72.8%	82.5%	69.1%
Total Person IDs	48	128	34	35	10	12	34	40	32	8	20	12	60	17	11	11	19	531

20% OF FACULTY



TEACH 69% OF CREDIT HOURS TAUGHT BY FACULTY

2023-2024 academic year



QUESTIONS

